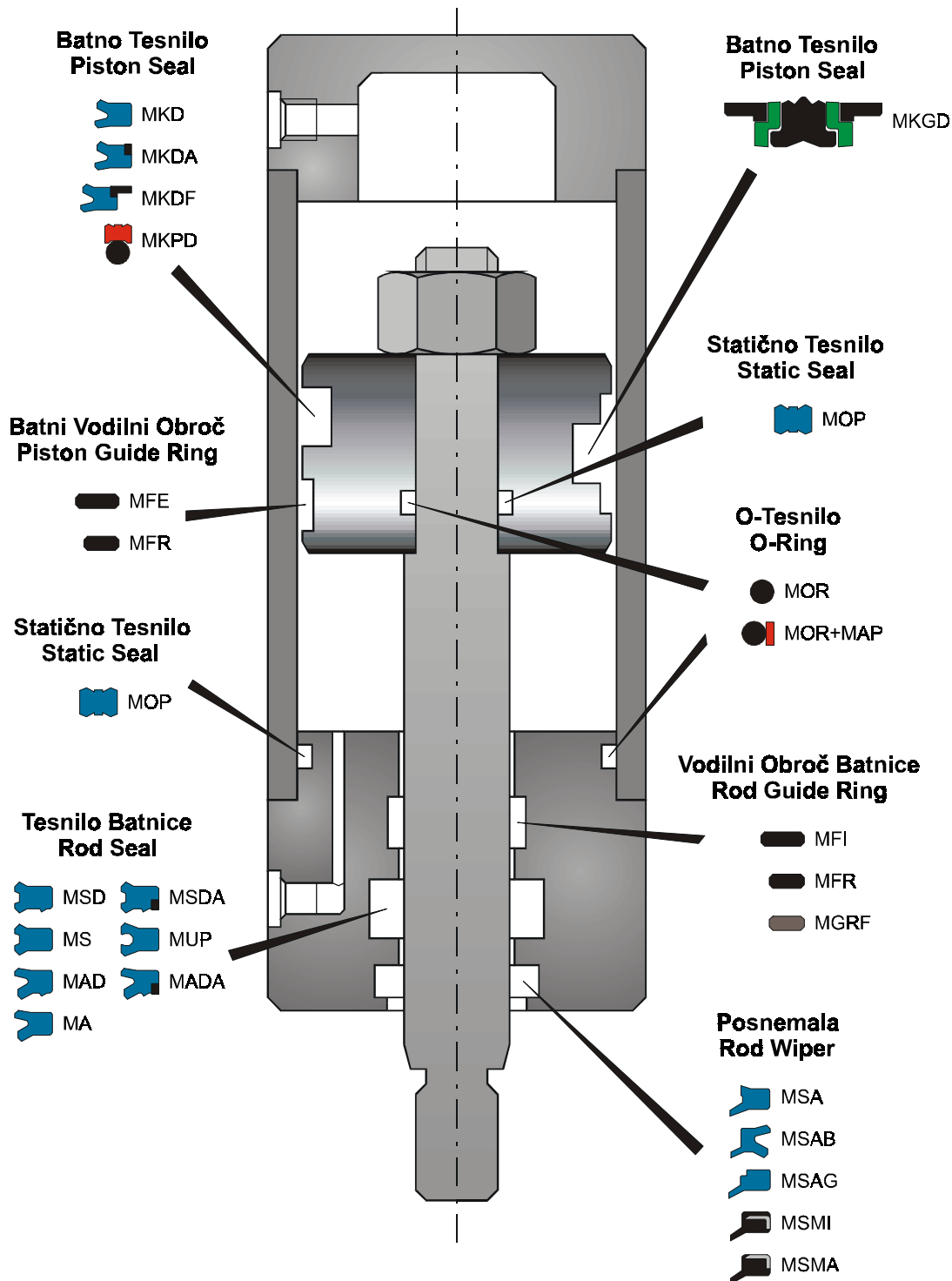


KATALOG HIDRAVLICNIH TESNIL

SEALING SYSTEMS

MAPRO d.o.o. Industrijska ulica 12, 4226 ŽIRI – SLOVENIJA  
Tel. : +386 (0)4 510 50 90, Fax: +386 (0)4 510 50 91  
e-mail: [info@mapro.si](mailto:info@mapro.si), [www.mapro.si](http://www.mapro.si)

## Prerez hidravličnega cilindra – *Hydraulic cylinder sketch*



<i>P (bar)</i>	<i>G (mm)</i>
50	1.20
100	0.80
200	0.40
300	0.25
400	0.17
500	0.10

Maksimalna radialna zračnost dovoljena za TPU tesnila - *Maximum radial gap allowed for TPU seals*

<b>POSNEMALA - WIPERS</b>					
	<b>P (bar)</b>	<b>V (m/s)</b>	<b>T (°C)</b>	<b>Mat.</b>	<b>str.</b>
<b>MSA</b>	-	0.8	-40 ÷ +100	TPU	5
<b>MSAB</b>	15	0.8	-40 ÷ +100	TPU	7
<b>MSAG</b>	-	0.8	-40 ÷ +100	TPU	8
<b>MSMI</b>	-	*	-30 ÷ +100	NBR	9
<b>MSMA</b>	-	*	-30 ÷ +100	NBR	11
<b>MSAA</b>	-	0.8	-40 ÷ +100	TPU	12
<b>MS1A-MS2A</b>	≤ 800	15 max	-40 ÷ +130	PTFE+NBR	51

<b>TESNILO BATNIC – ROD SEALS</b>					
	<b>P (bar)</b>	<b>V (m/s)</b>	<b>T (°C)</b>	<b>Mat.</b>	<b>str.</b>
<b>MS – MSD - MSDA</b>	400	0.5	-40 ÷ +100	TPU	13
<b>MA - MAD</b>	400	0.5	-40 ÷ +100	TPU	17
<b>MXB</b>	≤ 800	15 max	-40 ÷ +130	PTFE+NBR	53

<b>ASIMETRIČNO TESNILO BATNIC / BATA – ROD/PISTON SEALS</b>					
	<b>P (bar)</b>	<b>V (m/s)</b>	<b>T (°C)</b>	<b>Mat.</b>	<b>str.</b>
<b>MUP</b>	400	0.5	-40 ÷ +100	TPU	19

<b>TESNILO PRIROBNICE – SEALS FOR “SAE” FLANGES</b>					
	<b>P (bar)</b>	<b>V (m/s)</b>	<b>T (°C)</b>	<b>Mat.</b>	<b>str.</b>
<b>MPFS</b>	-	-	-40 ÷ +100	TPU	23

<b>BATNO TESNILO – PISTON SEALS</b>					
	<b>P (bar)</b>	<b>V (m/s)</b>	<b>T (°C)</b>	<b>Mat.</b>	<b>str.</b>
<b>MKD – MKDA</b>	400	0.5	-40 ÷ +100	TPU	24
<b>MKDF</b>	400	0.5	-40 ÷ +100	TPU+POM	26
<b>MSP</b>	-	-	-40 ÷ +110	POM	27
<b>MKPD</b>	400	0.5	-30 ÷ +100	TPU+NBR	28
<b>MKGD</b>	400	0.5	-40 ÷ +110	NBR+POM+TPE	30
<b>MYB</b>	≤ 800	15 max	-40 ÷ +130	PTFE+NBR	55

<b>V OBROČ – V RING</b>					
	<b>P (bar)</b>	<b>V (m/s)</b>	<b>T (°C)</b>	<b>Mat.</b>	<b>str.</b>
<b>MDV</b>	-	1	-40 ÷ +100	TPU	32

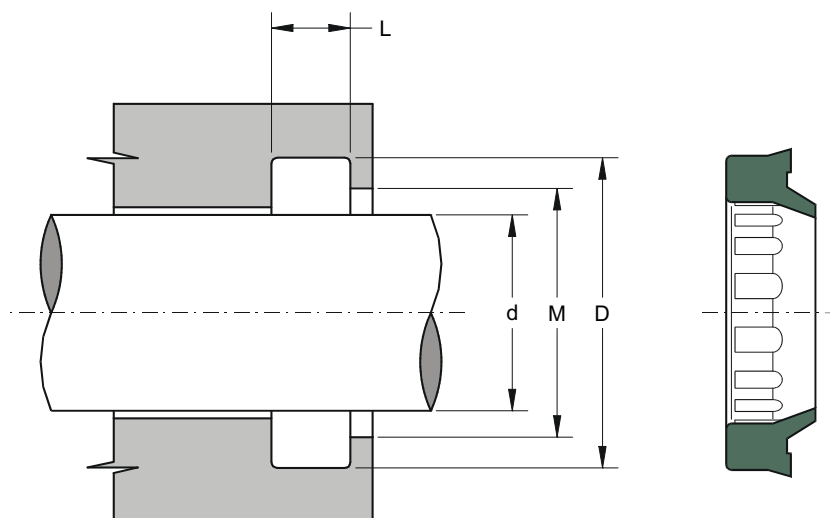
<b>VODILNI OBROČ – GUIDE RINGS</b>					
	<b>P (bar)</b>	<b>V (m/s)</b>	<b>T (°C)</b>	<b>Mat.</b>	<b>str.</b>
<b>MFR</b>	-	1	-40 ÷ +110	POM	33
<b>MFI</b>	-	1	-40 ÷ +110	POM	35
<b>MFE</b>	-	1	-40 ÷ +110	POM	37
<b>MGRF</b>	-	1	-40 ÷ +120	Fenolici / Phenolic	39
<b>MMRB</b>	-	15 max	-40 ÷ +130	PTFE	57

<b>O TESNILO / PODPORNİ OBROČ – OR / ANTIEXTRUSION RINGS</b>					
	<b>P (bar)</b>	<b>V (m/s)</b>	<b>T (°C)</b>	<b>Mat.</b>	<b>str.</b>
<b>MOR – MAP</b>	*	*	-30 ÷ +130 (OR) -40 ÷ +140 (AP)	NBR – TPE	41
<b>MAM</b>	*	*	-40 ÷ +140	TPE	49

\* odvisno od delovnih pogojev – depending on working conditions



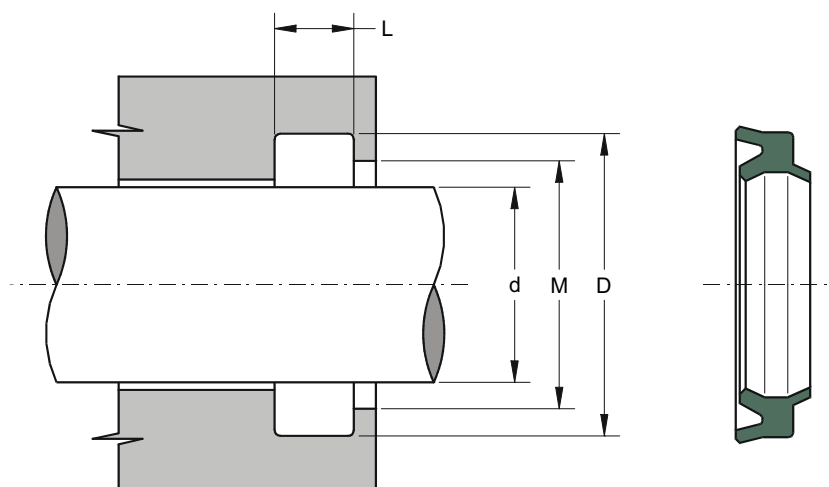
# MSA Posnemalo – Rod wiper with external lip



Koda - Part No.	$d^{f7}$	$D^{H10}$	$L^{+0.2}$	$M^{+0.2}$	€uro
MSA 4	4	12.0	3.0	9.0	0,3626
MSA 5/S	5	12.0	2.8	9.0	0,3626
MSA 6/S	6	12.0	3.0	9.0	0,4183
MSA 8	8	14.6	3.8	11.0	0,4183
MSA 9/S	9	13.0	2.5	12.0	0,4183
MSA 10	10	16.6	3.8	13.8	0,4463
MSA 10/S	10	15.0	1.0	13.0	0,4463
MSA 12	12	18.6	3.8	15.0	0,4463
MSA 14	14	20.6	3.8	17.0	0,5298
MSA 15	15	21.6	3.8	18.0	0,5298
MSA 16	16	22.6	3.8	19.0	0,5298
MSA 16/A	16	22.5	3.0	19.0	0,5298
MSA 18	18	24.6	3.8	21.0	0,5298
MSA 20	20	28.6	5.3	23.0	0,5298
MSA 20/A	20	26.0	3.4	23.0	0,5298
MSA 22	22	30.6	5.3	25.0	0,5578
MSA 22/A2	22	30.6	2.2	25.0	0,5578
MSA 24	24	32.6	5.3	27.0	0,5578
MSA 24/A2	24	32.6	2.2	27.0	0,5578
MSA 25	25	33.6	5.3	28.0	0,5578
MSA 28	28	36.6	5.3	31.0	0,6135
MSA 30	30	38.6	5.3	33.0	0,6693
MSA 30/A2	30	40.0	3.0	34.5	0,6693
MSA 32	32	40.6	5.3	35.0	0,6693
MSA 35	35	43.6	5.3	38.0	0,6693
MSA 35/A	35	43.6	5.0	38.0	0,6693
MSA 35/A2	35	45.0	4.0	39.0	0,6693
MSA 36	36	44.6	5.3	39.0	0,6693
MSA 38	38	46.6	5.3	41.0	0,7530
MSA 40	40	48.6	5.3	43.0	0,7530
MSA 42	42	50.6	5.3	45.0	0,7530
MSA 45	45	53.6	5.3	48.0	0,7530
MSA 45/A	45	55.6	5.3	48.0	0,8088
MSA 45/A2	45	60.0	4.2	53.0	0,8645
MSA 50	50	58.6	5.3	53.0	0,8924
MSA 50/A	50	60.6	5.3	53.0	0,8924
MSA 50/A2	50	65.5	4.2	58.0	1,0040

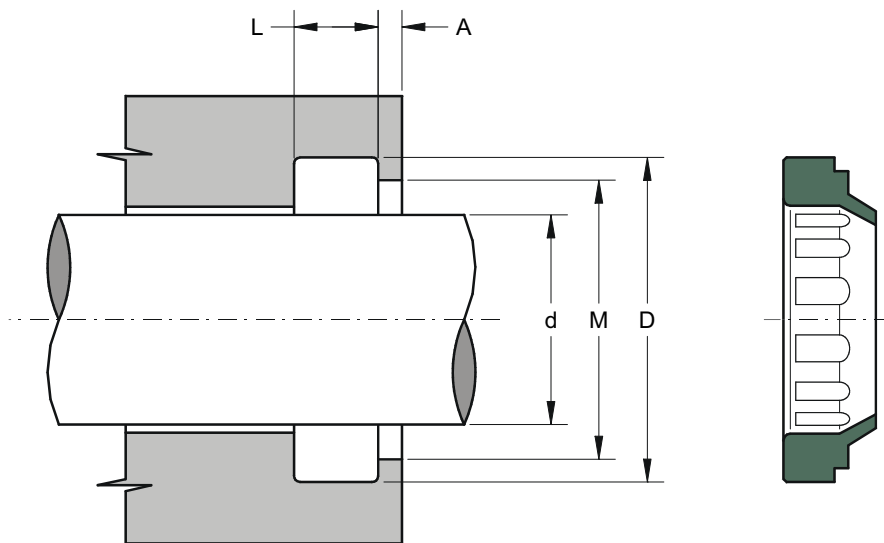
<i>Koda - Part No.</i>	$d^{f7}$	$D^{H10}$	$L^{+0.2}$	$M^{+0.2}$	<b>€uro</b>
MSA 55	55	63.6	5.3	58.0	<b>0,9482</b>
MSA 55/A	55	65.6	5.3	58.0	<b>0,9482</b>
MSA 56	56	64.6	5.3	59.0	<b>0,9761</b>
MSA 56/A	56	66.6	5.3	59.0	<b>0,9761</b>
MSA 60	60	68.6	5.3	63.0	<b>0,9761</b>
MSA 60/A	60	70.6	5.3	63.0	<b>0,9761</b>
MSA 63	63	71.6	5.3	66.0	<b>0,9761</b>
MSA 63/A	63	73.6	5.3	66.0	<b>0,9761</b>
MSA 65	65	73.6	5.3	68.0	<b>0,9761</b>
MSA 65/A	65	75.6	5.3	68.0	<b>0,9761</b>
MSA 70	70	78.6	5.3	73.0	<b>0,9761</b>
MSA 70/A	70	82.6	7.1	76.0	<b>0,9761</b>
MSA 70/B	70	80.6	5.3	73.0	<b>0,9761</b>
MSA 73/A	73	83.6	7.3	76.0	<b>1,0040</b>
MSA 75	75	83.6	5.3	78.0	<b>1,0040</b>
MSA 75/A	75	87.2	7.1	81.0	<b>1,0040</b>
MSA 80	80	88.6	5.3	83.0	<b>1,0877</b>
MSA 80/A	80	92.6	7.1	86.0	<b>1,1992</b>
MSA 85	85	97.2	7.1	91.0	<b>1,2271</b>
MSA 85/A	85	93.6	5.3	88.0	<b>1,1992</b>
MSA 90	90	102.2	7.1	96.0	<b>1,2271</b>
MSA 95	95	107.2	7.1	101.0	<b>1,3665</b>
MSA 100	100	112.2	7.1	106.0	<b>1,4224</b>
MSA 105	105	117.2	7.1	111.0	<b>1,4224</b>
MSA 110	110	122.2	7.1	116.0	<b>1,4502</b>
MSA 115	115	127.2	7.1	121.0	<b>1,6175</b>
MSA 120	120	132.2	7.1	126.0	<b>1,7012</b>
MSA 125	125	137.2	7.1	131.0	<b>1,7849</b>
MSA 130	130	142.2	7.1	136.0	<b>1,9243</b>
MSA 135	135	147.2	7.1	141.0	<b>2,0638</b>
MSA 140	140	152.2	7.1	146.0	<b>2,0916</b>
MSA 145	145	157.2	7.1	151.0	<b>2,1753</b>
MSA 150	150	162.2	7.1	156.0	<b>2,5379</b>
MSA 160	160	175.2	10.1	168.0	<b>3,4303</b>
MSA 170	170	185.2	10.1	178.0	<b>4,4343</b>
MSA 180	180	195.2	10.1	188.0	<b>5,0199</b>
MSA 190	190	205.2	10.1	198.0	<b>5,7451</b>
MSA 190/A	190	210.0	10.1	200.0	<b>5,8288</b>
MSA 200	200	215.2	10.1	208.0	<b>5,8288</b>
MSA 210	210	225.2	10.1	218.0	<b>6,1076</b>
MSA 220	220	235.2	10.1	228.0	<b>6,8885</b>
MSA 230	230	245.2	10.1	238.0	<b>7,2510</b>
MSA 240	240	255.2	10.1	248.0	<b>7,6136</b>
MSA 250	250	265.2	10.1	258.0	<b>8,0320</b>

# MSAB Posnemalo z notranjim utorom – Rod bidirectional scraper



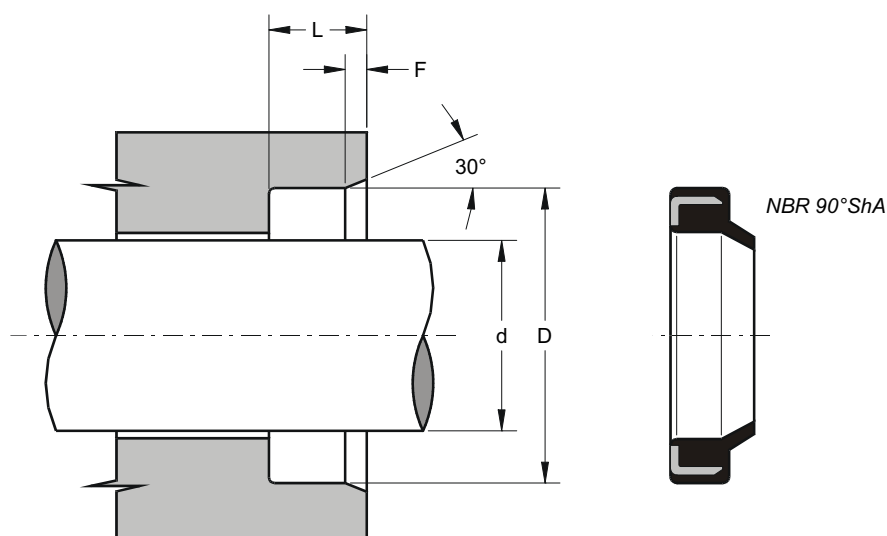
Koda - Part No.	$d^{f7}$	$D^{H10}$	$L^{+0.2}$	$M^{+0.2}$	€uro
MSAB 12	12	18.6	3.8	15.0	1,0318
MSAB 14/ISO	14	20.0	4.0	16.5	1,0877
MSAB 18	18	24.6	3.8	21.0	1,0877
MSAB 20	20	28.6	5.3	23.0	1,1992
MSAB 22	22	30.6	5.3	25.0	1,2829
MSAB 22/ISO	22	28.0	4.0	24.5	1,2829
MSAB 25	25	33.6	5.3	28.0	1,3387
MSAB 28	28	36.6	5.3	31.0	1,3665
MSAB 28/ISO	28	36.0	5.0	31.0	1,3665
MSAB 30	30	38.6	5.3	33.0	1,3944
MSAB 30/A	30	38.0	5.0	33.0	1,3944
MSAB 32	32	40.6	5.3	35.0	1,5060
MSAB 35	35	43.6	5.3	38.0	1,6454
MSAB 36	36	44.6	5.3	39.0	1,8685
MSAB 40	40	48.6	5.3	43.0	1,9243
MSAB 45	45	53.6	5.3	48.0	1,9522
MSAB 50	50	58.6	5.3	53.0	1,9801
MSAB 55	55	63.6	5.3	58.0	2,1195
MSAB 60	60	68.6	5.3	63.0	2,1753
MSAB 63	63	71.6	5.3	66.0	2,3705
MSAB 65	65	73.6	5.3	68.0	2,3985
MSAB 70	70	78.6	5.3	73.0	2,4263
MSAB 75	75	83.6	5.3	78.0	2,4263
MSAB 80	80	88.6	5.3	83.0	2,4542
MSAB 85	85	97.2	7.1	91.0	2,5379
MSAB 90	90	102.2	7.1	96.0	2,5936
MSAB 100	100	112.2	7.1	106.0	2,9004
MSAB 110	110	122.2	7.1	116.0	3,4303

# MSAG Posnemalo z robom – Rod wiper with shoulder



Koda - Part No.	$d^{f7}$	$D_{\pm 0.1}$	$L^{+0.15}$	$M^{H11}$	$A_{\pm 0.1}$	€uro
MSAG 16	16	24	4	22	1	0,4741
MSAG 20	20	28	4	26	1	0,5298
MSAG 22	22	30	4	28	1	0,5578
MSAG 24	24	32	4	30	1	0,5578
MSAG 25	25	33	4	31	1	0,5578
MSAG 28	28	36	4	34	1	0,6135
MSAG 30	30	38	4	36	1	0,6693
MSAG 32	32	40	4	38	1	0,6693
MSAG 35	35	43	4	41	1	0,6693
MSAG 36	36	44	4	42	1	0,6693
MSAG 40	40	48	4	46	1	0,7530
MSAG 45	45	53	4	51	1	0,7530
MSAG 50	50	58	4	56	1	0,8924
MSAG 55	55	63	4	61	1	0,9482
MSAG 60	60	68	4	66	1	0,9761
MSAG 63	63	71	4	69	1	0,9761
MSAG 65	65	73	4	71	1	0,9761
MSAG 70	70	78	4	76	1	0,9761
MSAG 75	75	83	4	81	1	1,0040
MSAG 80	80	88	4	86	1	1,0877
MSAG 85	85	93	4	91	1	1,2271
MSAG 90	90	98	4	96	1	1,2271
MSAG 100	100	108	4	106	1	1,3387

# MSMI Posnemalo z notranjim jeklenim obročem – Rod wiper with internal metal cage

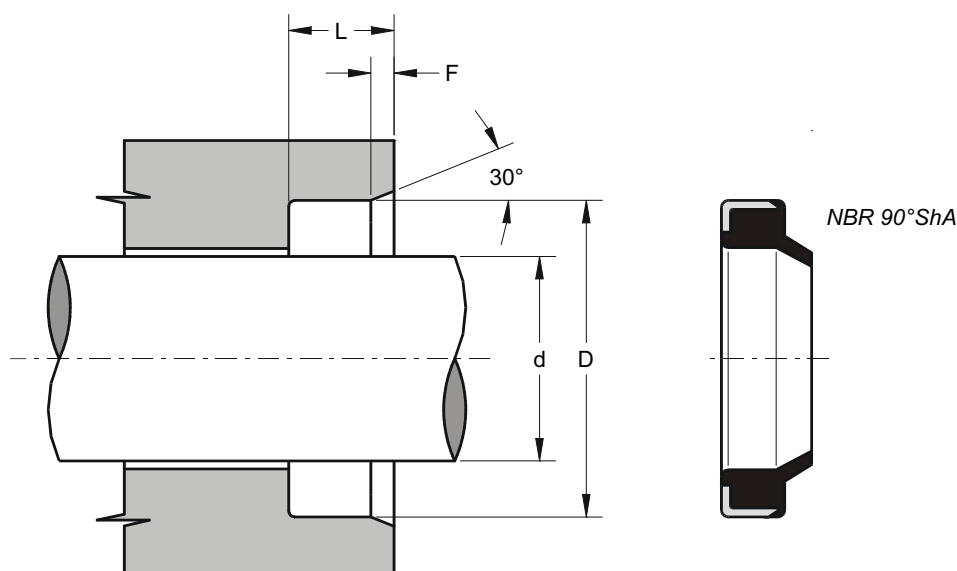


Koda - Part No.	$d^{f7}$	$D^{H8}$	$L^{+0.2}$	$F$	€uro
MSMI 6 13 3.5	6	13	3.5	0.5	1,3387
MSMI 8 14 3.5	8	14	3.5	0.6	1,3387
MSMI 10 16 3.5	10	16	3.5	0.6	1,3944
MSMI 12 18 3.5	12	18	3.5	0.6	1,3944
MSMI 14 20 3.5	14	20	3.5	0.6	1,5060
MSMI 15 25 5	15	25	5.0	1.0	1,5060
MSMI 15 21 3.5	15	21	3.5	0.6	1,5060
MSMI 16 22 3	16	22	3.5	0.5	1,5060
MSMI 16 26 5	16	26	5.0	1.0	1,5060
MSMI 18 24 4	18	24	4.0	0.8	1,5060
MSMI 18 28 5	18	28	5.0	1.0	1,5339
MSMI 20 30 5	20	30	5.0	1.0	1,5339
MSMI 20 30 7	20	30	7.0	1.5	1,5339
MSMI 22 32 5	22	32	5.0	1.0	1,6734
MSMI 22 32 7	22	32	7.0	1.5	1,6734
MSMI 25 35 5	25	35	5.0	1.0	1,6734
MSMI 25 35 7	25	35	7.0	1.5	1,6734
MSMI 26 35 7	26	35	7.0	1.5	1,6734
MSMI 28 38 5	28	38	5.0	1.0	1,7849
MSMI 30 40 5	30	40	5.0	1.0	1,7849
MSMI 30 40 7	30	40	7.0	1.5	1,7849
MSMI 32 42 5	32	42	5.0	1.0	1,8406
MSMI 35 45 7	35	45	7.0	1.5	1,8406
MSMI 36 45 7	36	45	7.0	1.5	1,8406
MSMI 36 46 5	36	46	5.0	1.0	1,8965
MSMI 38 48 7	38	48	7.0	1.5	1,9522
MSMI 40 50 5	40	50	5.0	1.0	1,9522
MSMI 40 50 7	40	50	7.0	1.5	1,9522
MSMI 45 55 5	45	55	5.0	1.0	2,0638
MSMI 45 55 7	45	55	7.0	1.5	2,0638
MSMI 50 60 5	50	60	5.0	1.0	2,1475
MSMI 50 60 7	50	60	7.0	1.5	2,1475
MSMI 55 65 5	55	65	5.0	1.0	2,2311
MSMI 55 65 7	55	65	7.0	1.5	2,2311

<b>Koda - Part No.</b>	<b><math>d^{f7}</math></b>	<b><math>D^{H8}</math></b>	<b><math>L^{+0.2}</math></b>	<b><math>F</math></b>	<b>€uro</b>
MSMI 60 70 5	60	70	5.0	1.0	2,4263
MSMI 60 70 7	60	70	7.0	1.5	2,4263
MSMI 65 75 5	65	75	5.0	1.0	2,5658
MSMI 65 75 7	65	75	7.0	1.5	2,5658
MSMI 70 80 5	70	80	5.0	1.0	3,0677
MSMI 70 80 7	70	80	7.0	1.5	3,0677
MSMI 75 83 7	75	83	7.0	1.5	3,3466
MSMI 75 85 7	75	85	7.0	1.5	3,3466
MSMI 80 88 7	80	88	7.0	1.5	3,6256
MSMI 80 90 7	80	90	7.0	1.5	3,6256
MSMI 85 95 7	85	95	7.0	1.5	3,8487
MSMI 90 100 7	90	100	7.0	1.5	4,0997
MSMI 100 110 7	100	110	7.0	1.5	5,1315
MSMI 100 120 7	100	120	7.0	1.5	5,7451
MSMI 120 130 7	120	130	7.0	1.5	6,6933
MSMI 130 145 9	130	145	9.0	2.0	8,3667
MSMI 140 155 9	140	155	9.0	2.0	9,1475
MSMI 150 165 9	150	165	9.0	2.0	11,4623
MSMI 160 175 9	160	175	9.0	2.0	12,9961

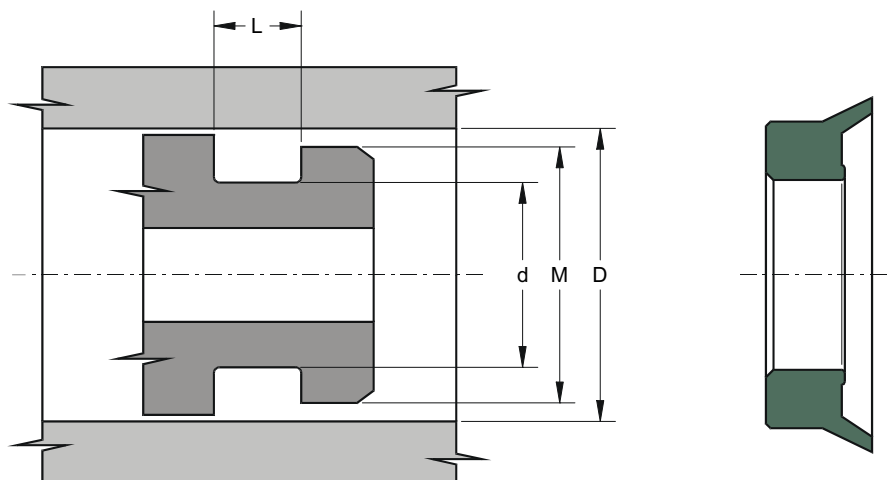
# MSMA

Posnemalo z zunanjim jeklenim obročem – Rod wiper with external metal cage



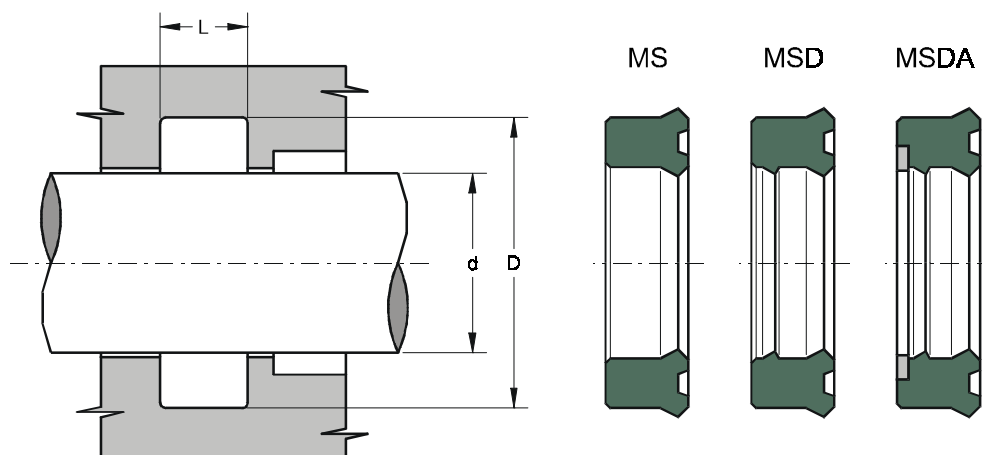
Koda - Part No.	$d^{f7}$	$D^{H8}$	$L^{+0.2}$	F	€uro
MSMA 12 20 4	12	20	4	0.8	1,1434
MSMA 16 22 3	16	22	3	0.5	1,2271
MSMA 16 26 5	16	26	5	1.0	1,2829
MSMA 20 28 3	20	28	3	0.6	1,4781
MSMA 20 30 7	20	30	7	1.5	1,4781
MSMA 25 35 7	25	35	7	1.5	1,6175
MSMA 30 40 5	30	40	5	1.0	1,7291
MSMA 35 45 7	35	45	7	1.5	1,9243
MSMA 40 50 5	40	50	5	1.0	2,0916
MSMA 40 50 7	40	50	7	1.5	2,0916
MSMA 45 55 7	45	55	7	1.5	2,2590
MSMA 50 60 7	50	60	7	1.5	2,3705
MSMA 50 65 5	50	65	5	1.0	2,3705
MSMA 55 65 7	55	65	7	1.0	2,3705
MSMA 60 70 7	60	70	7	1.5	2,5658
MSMA 65 75 7	65	75	7	1.5	2,9562
MSMA 70 80 7	70	80	7	1.5	3,0399
MSMA 75 85 7	75	85	7	1.5	3,3466
MSMA 80 90 7	80	90	7	1.5	3,7371
MSMA 90 100 7	90	100	7	1.5	4,0717
MSMA 95 105 7	95	105	7	1.5	4,4343
MSMA 100 110 7	100	110	7	1.5	4,6295
MSMA 110 120 7	110	120	7	1.5	5,3825
MSMA 120 130 7	120	130	7	1.5	5,9124

# MSAA Zunanje posnemalo – External wiper



Koda - Part No.	$D^{H10}$	$d^{+0.1}$	$L^{+0.25}$	$M$	€uro
MSAA 40	40	31.4	5.3	37	0,6693
MSAA 50	50	41.4	5.3	47	0,7530
MSAA 60	60	51.4	5.3	57	0,9204
MSAA 63	63	54.4	5.3	60	0,9761
MSAA 70	70	61.4	5.3	67	1,0040
MSAA 80	80	71.4	5.3	77	1,0318
MSAA 90	90	81.4	5.3	87	1,1155
MSAA 95	95	86.4	5.3	92	1,2271
MSAA 100	100	91.4	5.3	97	1,2550
MSAA 110	110	101.4	5.3	107	1,3387
MSAA 115/A	115	107.0	5.0	111	1,3944
MSAA 120	120	111.4	5.3	117	1,4502
MSAA 130	130	121.4	5.3	127	1,8965
MSAA 140	140	131.4	5.3	137	1,9243

# MS,MSD,MSDA Tesnilo batnice – Semicompact rod seals



Koda - Part No.	$d^{f7}$	$D^{H10}$	$L^{+0.25}$	€uro
MS 12 18 4.5	12	18.0	5.0	0,8924
MS 16 22 4	16	22.0	4.5	1,0040
MS 20 25 3.7	20	25.0	4.5	1,0877
MS 22 28 4.5	22	28.0	5.5	1,1992
MS 22 32 8	22	32.0	9.0	1,3387
MS 25 32 4	25	32.0	5.0	1,3108
MSD 6 14 5.8	6	14.0	6.3	0,7530
MSD 8 15 5.8	8	15.0	6.3	0,7530
MSD 8 16 5.8	8	16.0	6.3	0,8088
MSD 10 18 5.8	10	18.0	6.3	0,9204
MSD 12 19 5.8	12	19.0	6.3	1,0040
MSD 12 20 5.8	12	20.0	6.3	1,0318
MSD 12 23 6.5	12	23.0	7.5	1,0598
MSD 14 20 4.8	14	20.0	5.3	0,9482
MSD 14 22 5.8	14	22.0	6.3	1,0040
MSD 15 21.5 4.2	15	21.5	5.0	1,0877
MSD 15 23 5.8	15	23.0	6.3	1,0877
MSD 16 24 5.8	16	24.0	6.3	1,0877
MSD 18 25 5	18	25.0	5.7	1,1992
MSD 18 26 5.8	18	26.0	6.3	1,1992
MSD 18 26 8	18	26.0	9.0	1,1992
MSD 18 28 5.8	18	28.0	6.3	1,1992
MSD 18 28 7	18	28.0	8.0	1,1992
MSD 20 26 5.2	20	26.0	6.0	1,0877
MSD 20 27 5.8	20	27.0	6.5	1,0877
MSD 20 28 5.8	20	28.0	6.3	1,1992
MSD 20 28 7	20	28.0	8.0	1,1992
MSD 20 30 7	20	30.0	8.0	1,2829
MSD 22 30 5.8	22	30.0	6.3	1,2829
MSD 22 30 7	22	30.0	8.0	1,2829
MSD 22 32 7	22	32.0	8.0	1,2829
MSD 22 32 8	22	32.0	9.0	1,3108
MSD 24 34 5.8	24	34.0	6.5	1,3387
MSD 25 33 5.8	25	33.0	6.3	1,3387
MSD 25 33 6.5	25	33.0	7.5	1,3387
MSD 25 33 8	25	33.0	9.0	1,3665

Koda - Part No.	$d^{f7}$	$D^{H10}$	$L^{+0.25}$	€uro
MSD 25 33 6.5	25	33.0	7.5	1,3387
MSD 25 35 7	25	35.0	8.0	1,3665
MSD 25 35 8	25	35.0	9.0	1,3665
MSD 25 36 5	25	36.0	6.0	1,3944
MSD 27 37 5.8	27	37.0	6.3	1,3944
MSD 28 36 5.8	28	36.0	6.3	1,3944
MSD 28 36 8	28	36.0	9.0	1,3944
MSD 28 38 7	28	38.0	8.0	1,3944
MSD 30 38 5.8	30	38.0	6.3	1,3944
MSD 30 38 7	30	38.0	8.0	1,4224
MSD 30 40 6.5	30	40.0	7.5	1,4502
MSD 30 40 10	30	40.0	11.0	1,5060
MSD 32 40 5.8	32	40.0	6.3	1,5060
MSD 32 40 6.7	32	40.0	7.7	1,5060
MSD 32 40 8	32	40.0	9.0	1,5060
MSD 32 42 7	32	42.0	8.0	1,5060
MSD 32 42 10	32	42.0	11.0	1,5060
MSD 35 43 5.8	35	43.0	6.3	1,6734
MSD 35 43 8	35	43.0	9.0	1,7291
MSD 35 44 7	35	44.0	8.0	1,7569
MSD 35 45 7	35	45.0	8.0	1,7569
MSD 35 45 10	35	45.0	11.0	1,8406
MSD 35 45 12.5	35	45.0	13.5	1,8406
MSD 35 50 10	35	50.0	11.0	1,9522
MSD 36 44 5.8	36	44.0	6.3	1,7569
MSD 36 46 7	36	46.0	8.0	1,7569
MSD 36 46 10	36	46.0	11.0	1,7849
MSD 38 45 6	38	45.0	7.0	1,7849
MSD 38 50 8.5	38	50.0	9.5	1,9243
MSD 40 48 5.8	40	48.0	6.3	1,9243
MSD 40 48 8	40	48.0	9.0	1,9243
MSD 40 50 5.8	40	50.0	6.3	1,9243
MSD 40 50 7	40	50.0	8.0	1,9243
MSD 40 50 10	40	50.0	11.0	1,9243
MSD 40 55 10	40	55.0	11.0	1,9801
MSD 42 52 8	42	52.0	9.0	1,9243
MSD 42 53 9	42	53.0	10.0	1,9801
MSD 45 53 5.8	45	53.0	6.3	1,9243
MSD 45 53 8	45	43.0	9.0	1,9801
MSD 45 55 5.8	45	55.0	6.3	1,9801
MSD 45 55 7	45	55.0	8.0	1,9801
MSD 45 55 10	45	55.0	11.0	1,9801
MSD 45 57 9	45	57.0	10.0	2,0079
MSD 46 54 7.5	46	54.0	8.5	1,9801
MSD 48 60 6	48	60.0	7.0	2,0079
MSD 50 58 8	50	58.0	9.0	2,0638
MSD 50 60 7	50	60.0	8.0	2,0638
MSD 50 60 9	50	60.0	10.0	2,0638
MSD 50 60 10	50	60.0	11.0	2,0638
MSD 50 62 8	50	62.0	9.0	2,0916
MSD 50 62 10	50	62.0	11.0	2,0916
MSD 50 65 10	50	65.0	11.0	2,1195
MSD 50 65 11.5	50	65.0	12.5	2,1195
MSD 50 70 13.5	50	70.0	14.5	2,2590
MSD 55 63 8	55	63.0	9.0	2,1195
MSD 55 65 7	55	65.0	8.0	2,1195
MSD 55 65 10	55	65.0	11.0	2,1195
MSD 55 65 12	55	65.0	13.0	2,1195
MSD 55 70 9.5	55	70.0	10.5	2,1195
MSD 56 66 6.5	56	66.0	7.5	2,0638

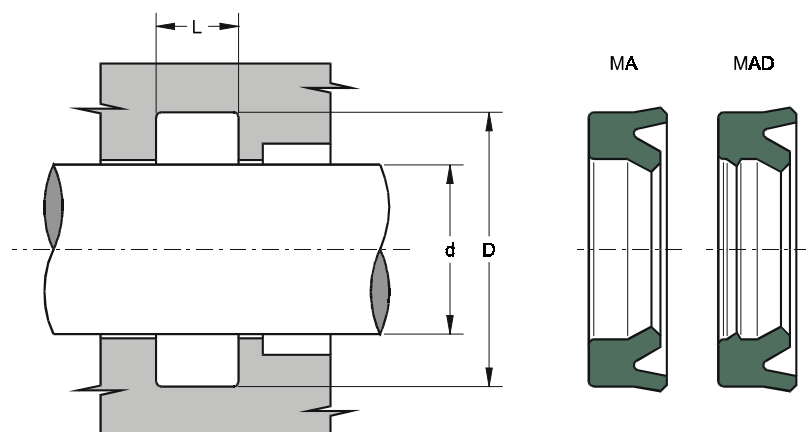
<b>Koda - Part No.</b>	<b>d<sup>f7</sup></b>	<b>D<sup>H10</sup></b>	<b>L<sup>+0.25</sup></b>	<b>€uro</b>
MSD 56 66 10	56	66.0	11.0	2,1195
MSD 56 71 9.5	56	71.0	10.5	2,1195
MSD 56 71 11.5	56	71.0	12.5	2,1753
MSD 60 68 8	60	68.0	9.0	2,2032
MSD 60 70 7	60	70.0	8.0	2,2032
MSD 60 70 10	60	70.0	11.0	2,1753
MSD 60 70 12	60	70.0	13.0	2,2032
MSD 60 72 9	60	72.0	10.0	2,2032
MSD 60 75 10	60	75.0	11.0	2,2590
MSD 61 69 7.5	61	69.0	8.5	2,1195
MSD 63 73 10	63	73.0	11.0	2,2311
MSD 63 75 8.5	63	75.0	9.5	2,2590
MSD 63 75 10	63	75.0	11.0	2,2590
MSD 63 78 11.5	63	78.0	12.5	2,3985
MSD 65 75 12	65	75.0	13.0	2,2590
MSD 65 77 8.5	65	77.0	9.5	2,3985
MSD 68 76 8	68	76.0	9.0	2,2590
MSD 70 80 7	70	80.0	8.0	2,3985
MSD 70 80 10	70	80.0	11.0	2,3985
MSD 70 80 12	70	80.0	13.0	2,4263
MSD 70 82 9	70	82.0	10.0	2,4263
MSD 70 85 11	70	85.0	12.0	2,5100
MSD 75 83 8	75	83.0	9.0	2,4263
MSD 75 85 7	75	85.0	8.0	2,4263
MSD 75 90 10.5	75	90.0	11.5	2,5379
MSD 76 84 7.5	76	84.0	8.5	2,4263
MSD 80 88 11.5	80	88.0	12.5	2,5379
MSD 80 90 7	80	90.0	8.0	2,5379
MSD 80 90 12	80	90.0	13.0	2,5379
MSD 80 92 9	80	92.0	9.6	2,5379
MSD 80 95 11	80	95.0	12.0	3,2630
MSD 80 96 9.5	80	96.0	10.5	2,5658
MSD 85 95 7	85	95.0	8.0	2,5936
MSD 85 95 12	85	95.0	13.0	2,5936
MSD 85 97 8.5	85	97.0	9.5	2,5936
MSD 88 96 7.5	88	96.0	8.5	2,5936
MSD 90 102 9	90	102.0	10.0	2,7052
MSD 90 105 11.5	90	105.0	12.5	2,7330
MSD 91 99 7.5	91	99.0	8.5	2,5936
MSD 95 112 11	95	112.0	12.0	2,7610
MSD 100 108 11.5	100	108.0	12.5	2,9562
MSD 100 115 11.5	100	115.0	12.5	2,9004
MSD 107 115 8	107	115.0	9.0	3,0120
MSD 110 125 11	110	125.0	12.0	3,3746
MSD 120 140 12	120	140.0	13.0	3,9601
MSD 126 134 7.5	126	134.0	8.5	3,6534
MSD 140 160 11.5	140	160.0	12.5	4,9642
MSD 145 153 7.5	145	153.0	8.5	4,6017
MSD 210 230 15	210	230.0	16.0	12,0200
MSDA 40 48 8	40	48.0	9.0	2,4263
MSDA 40 50 10	40	50.0	11.0	2,4263
MSDA 40 55 10	40	55.0	11.0	2,5379
MSDA 45 53 9.5	45	53.0	10.5	2,5379
MSDA 45 55 10	45	55.0	11.0	2,5379
MSDA 45 60 10	45	60.0	11.0	2,5936
MSDA 50 60 10	50	60.0	11.0	2,5936
MSDA 50 65 10	50	65.0	11.0	2,6215
MSDA 55 65 10	55	65.0	11.0	2,6773

<b>Koda - Part No.</b>	<b><math>d^{f7}</math></b>	<b><math>D^{H10}</math></b>	<b><math>L^{+0.25}</math></b>	<b>€uro</b>
MSDA 56 71 11.5	56	71.0	12.5	2,7330
MSDA 60 70 12.5	60	70.0	13.5	2,7889
MSDA 60 75 12	60	75.0	13.0	2,8726
MSDA 60 80 12	60	80.0	13.0	3,0120
MSDA 65 80 11.5	65	80.0	12.5	3,0956
MSDA 70 85 12	70	85.0	13.0	3,1236
MSDA 70 90 13.5	70	90.0	14.5	3,2630
MSDA 75 90 12	75	90.0	13.0	3,2351
MSDA 80 88 9	80	88.0	10.0	3,1793
MSDA 80 95 11	80	95.0	12.0	3,2630
MSDA 80 100 11.5	80	100.0	12.5	3,3187
MSDA 80 100 13.5	80	100.0	14.5	3,3187
MSDA 90 105 12	90	105.0	13.0	3,3746
MSDA 100 110 12.5	100	110.0	13.5	3,5697
MSDA 100 113 12.5	100	113.0	13.5	3,5976
MSDA 100 120 13.5	100	120.0	14.5	3,9601
MSDA 110 120 13.5	110	120.0	14.5	3,9601
MSDA 110 125 12	110	125.0	13.0	3,5140
MSDA 110 130 11.5	110	130.0	12.5	4,2391
MSDA 120 135 11.5	120	135.0	12.5	4,4064
MSDA 120 140 11.5	120	140.0	12.5	4,5180
MSDA 130 145 12	130	145.0	13.0	5,2988
MSDA 140 155 12	140	155.0	13.0	5,5219

# MA – MAD

Tesnilo batnice z asimetričnim robom – *Rod seal with*

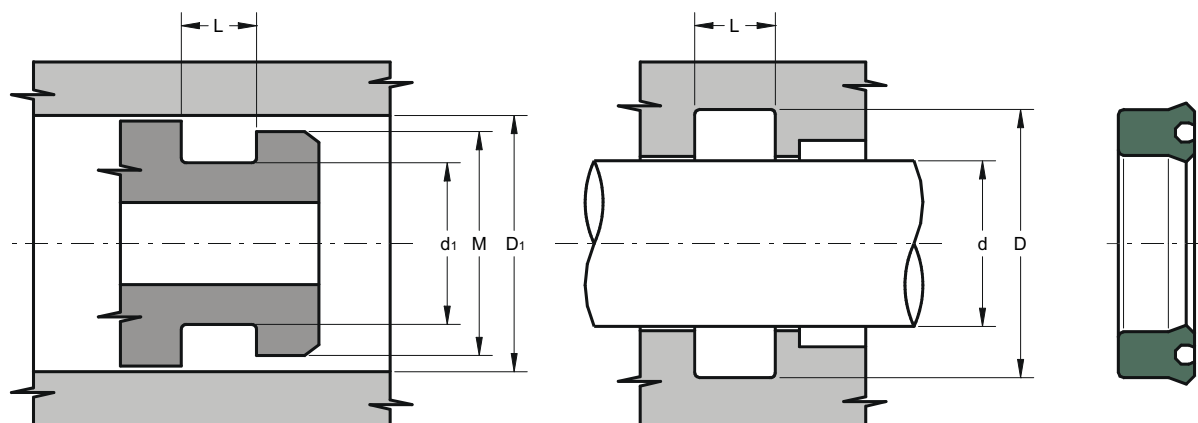
*asymmetric lips*



Koda - Part No.	$d^{f7}$	$D^{H10}$	$L^{+0.25}$	€uro
MA 10 20 7	10	20.0	8.0	0,9761
MA 12 20 5.8	12	20.0	6.3	1,0318
MA 12 22 7	12	22.0	8.0	1,0040
MA 14 22 5.8	14	22.0	6.3	1,0040
MA 15 23 5.8	15	23.0	6.3	1,0877
MA 16 20.6 3.3	16	20.6	3.6	1,0040
MA 16 22 5	16	22.0	5.5	1,0040
MA 16 24 5.8	16	24.0	6.3	1,0877
MA 18 24 4.7	18	24.0	5.5	1,0877
MA 18 26 5.8	18	26.0	6.3	1,1992
MA 20 26 5	20	26.0	5.5	1,0877
MA 20 28 5.8	20	28.0	6.3	1,1992
MA 20 28 6	20	28.0	7.0	1,1992
MA 20 28 7	20	28.0	8.0	1,1992
MA 22 30 5.8	22	30.0	6.3	1,2829
MA 24 34 7	24	34.0	8.0	1,3665
MA 25 33 5.8	25	33.0	6.3	1,3387
MA 25 35 7	25	25.0	8.0	1,3665
MA 28 40 8.5	28	40.0	9.5	1,4502
MA 30 38 5.8	30	38.0	6.3	1,3944
MA 30 38 8	30	38.0	9.0	1,4224
MA 30 40 7	30	40.0	8.0	1,4502
MA 30 40 9.5	30	40.0	10.5	1,5060
MA 32 40 5.8	32	40.0	6.3	1,5060
MA 32 40 8	32	40.0	9.0	1,5060
MA 32 42 7	32	42.0	8.0	1,5060
MA 33 43 10	33	43.0	11.0	1,6734
MA 35 43 5.8	35	43.0	6.3	1,6734
MA 35 43 8	35	43.0	9.0	1,7291
MA 35 45 7	35	45.0	8.0	1,7569
MA 35 46 8	35	46.0	9.0	1,8406
MA 36 46 7	36	46.0	8.0	1,7569
MA 38 44.5 4.7	38	44.5	5.3	1,7569
MA 40 48 5.8	40	48.0	6.3	1,9243
MA 40 50 7	40	50.0	8.0	1,9243
MA 40 50 10	40	50.0	11.0	1,9243

<b>Koda - Part No.</b>	<b>d<sup>f7</sup></b>	<b>D<sup>H10</sup></b>	<b>L<sup>+0.25</sup></b>	<b>€uro</b>
MA 45 55 7	45	55.0	8.0	1,9801
MA 45 55 10	45	55.0	11.0	1,9801
MA 45 58 9	45	58.0	10.0	2,0079
MA 50 60 7	50	60.0	8.0	2,0638
MA 50 60 10	50	60.0	11.0	2,0638
MA 50 65 11.5	50	65.0	12.5	2,1195
MA 50 68 9	50	68.0	10.0	2,1195
MA 55 65 7	55	65.0	8.0	2,1195
MA 55 65 10	55	65.0	11.0	2,1195
MA 55 65 12	55	65.0	13.0	2,1195
MA 55 70 9.5	55	70.0	10.5	2,1195
MA 60 65.6 5.6	60	65.6	6.3	2,1195
MA 60 70 7	60	70.0	8.0	2,2032
MA 60 72 8	60	72.0	9.0	2,2590
MA 60 75 10	60	75.0	11.0	2,2590
MA 60 75 12	60	75.0	13.0	2,3148
MA 65 80 10	65	80.0	11.0	2,4263
MA 70 80 7	70	80.0	8.0	2,3985
MA 70 85 10	70	85.0	11.0	2,5100
MA 70 85 11	70	85.0	12.0	2,5100
MA 80 90 7	80	90.0	8.0	2,5379
MA 80 90 12	80	90.0	13.0	2,5379
MA 80 95 10	80	95.0	11.0	2,5658
MA 85 100 12	85	100.0	13.0	2,6215
MA 90 110 12	90	110.0	13.0	2,8726
MA 100 115 10.5	100	115.0	11.5	2,9004
MA 110 130 12	110	130.0	13.0	3,4303
MA 130 145 14	130	145.0	15.0	4,0717
MAD 12 22 8	12	22.0	9.0	1,0040
MAD 35 43 7	35	43.0	8.0	1,6734
MAD 55 65 10	55	65.0	11,0	2,1195

# MUP Asimetrično tesnilo batnice in bata – Rod and piston seal with symmetric lips



Koda - Part No.	$d_1^{f8}$ $d^{f7}$	$D_1^{H10}$ $D^{H10}$	$L^{+0.25}$	$M$	€uro
MUP 3 9 4.5	3	9	5.0	5	0,6359
MUP 4 10 4	4	10	4.5	6	0,6972
MUP 4 10 4.5	4	10	5.0	6	0,6972
MUP 5 12 5	5	12	5.5	7	0,7251
MUP 5 12 6	5	12	7.0	7	0,7251
MUP 5 17 9	5	17	10.0	11	0,7530
MUP 6 12 4	6	12	4.5	8	0,7251
MUP 6 12 5.5	6	12	6.0	8	0,7251
MUP 6 12 6	6	12	6.5	8	0,7251
MUP 6 15 8	6	15	9.0	9	0,7530
MUP 8 14 6	8	14	7.0	10	0,7530
MUP 8 15 5.8	8	15	6.3	10	0,7530
MUP 8 15 8	8	15	9.0	10	0,7530
MUP 8 16 5.8	8	16	6.3	10	0,8088
MUP 8 18 9	8	18	10.0	11	0,8924
MUP 10 16 6	10	16	6.5	12	0,8645
MUP 10 18 5	10	18	6.0	12	0,9204
MUP 10 18 6	10	18	7.0	12	0,9204
MUP 10 18 8	10	18	9.0	12	0,9204
MUP 10 20 8	10	20	9.0	12	0,9761
MUP 12 18 6	12	18	7.0	14	1,0040
MUP 12 20 8	12	20	9.0	14	1,0318
MUP 12 22 5	12	22	6.0	15	1,0040
MUP 12 22 7	12	22	8.0	15	1,0040
MUP 12 22 8	12	22	9.0	15	1,0040
MUP 14 20 4.8	14	20	5.3	16	0,9482
MUP 14 22 6	14	22	7.0	16	1,0040
MUP 14 24 8	14	24	9.0	16	1,0877
MUP 15 25 8	15	25	9.0	18	1,0877
MUP 15 25 10	15	25	11.0	18	1,0877

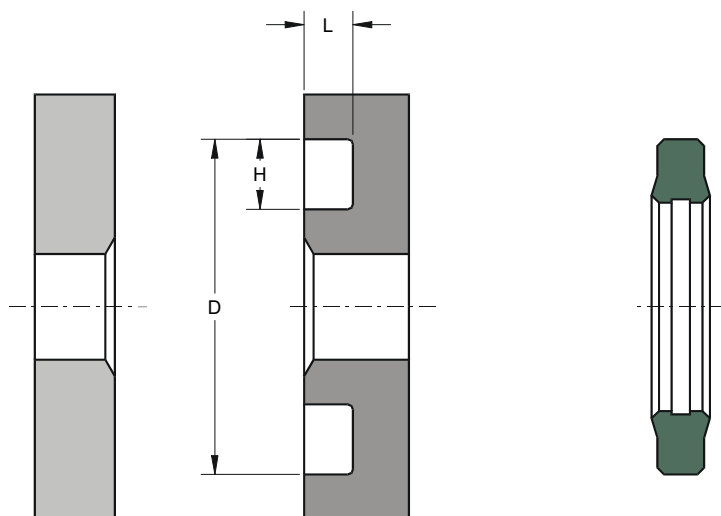
Koda - Part No.	$d_1^{f8}$ $d^{f7}$	$D_1^{H10}$ $D^{H10}$	$L^{+0.25}$	$M$	€uro
MUP 16 22 4	16	22	4.5	18	1,0040
MUP 16 22 5	16	22	5.5	18	1,0040
MUP 16 24 5	16	24	6.0	18	1,0877
MUP 16 24 9	16	24	10.0	18	1,1992
MUP 16 26 5	16	26	6.0	19	1,1992
MUP 16 26 8	16	26	9.0	19	1,1992
MUP 16 28 6	16	28	7.0	19	1,1992
MUP 18 25 5	18	25	5.5	20	1,1992
MUP 18 26 6.5	18	26	7.5	20	1,1992
MUP 18 26 8	18	26	9.0	20	1,1992
MUP 18 28 8	18	28	9.0	21	1,1992
MUP 18 30 8	18	30	9.0	21	1,2550
MUP 19 25 6	19	25	7.0	21	1,0598
MUP 20 28 4	20	28	5.0	22	1,1992
MUP 20 28 8	20	28	9.0	22	1,1992
MUP 20 30 8	20	30	9.0	23	1,2829
MUP 20 30 10	20	30	11.0	23	1,3387
MUP 20 32 7.5	20	32	8.5	23	1,2829
MUP 20 40 10	20	40	11.0	24	1,5060
MUP 22 28 8	22	28	9.0	24	1,2271
MUP 22 30 6	22	30	7.0	24	1,2829
MUP 22 32 8	22	32	9.0	25	1,3108
MUP 22 32 10	22	32	11.0	25	1,3387
MUP 22 35 10	22	35	11.0	25	1,3387
MUP 24 32 7	24	32	8.0	26	1,2550
MUP 25 35 5	25	35	5.5	28	1,3387
MUP 25 35 8	25	35	9.0	28	1,3665
MUP 25 35 10	25	35	11.0	28	1,3944
MUP 25 38 8	25	38	9.0	28	1,3944
MUP 25 38 10	25	38	11.0	28	1,3944
MUP 25 40 10	25	40	11.0	28	1,5060
MUP 28 35 4.7	28	35	5.5	30	1,3108
MUP 28 36 6.5	28	36	7.5	30	1,3944
MUP 28 38 7	28	38	8.0	31	1,3944
MUP 28 38 8	28	38	9.0	31	1,3944
MUP 28 38 10	28	38	11.0	31	1,3944
MUP 28 40 10	28	40	11.0	31	1,4502
MUP 30 38 6	30	38	6.5	32	1,3944
MUP 30 38 7	30	38	8.0	32	1,4224
MUP 30 40 5	30	40	5.5	33	1,4502
MUP 30 40 10	30	40	11.0	33	1,5060
MUP 30 42 9	30	42	10.0	33	1,5060
MUP 30 42 10	30	42	11.0	33	1,5060
MUP 30 45 10	30	45	11.0	34	1,7569
MUP 30 50 10	30	50	11.0	34	1,9801
MUP 30 50 12	30	50	13.0	34	1,9801
MUP 32 40 5.5	32	40	6.0	34	1,5060
MUP 32 40 8	32	40	9.0	34	1,5060
MUP 32 42 10	32	42	11.0	35	1,5060
MUP 32 45 10	32	45	11.0	35	1,7566
MUP 34 45 7	34	45	8.0	37	1,7012
MUP 34 45 9	34	45	10.0	37	1,7012
MUP 35 45 7	35	45	8.0	38	1,7569
MUP 35 45 8	35	45	9.0	38	1,7569
MUP 35 45 10	35	45	11.0	38	1,8406
MUP 35 48 10	35	48	11.0	38	1,8685
MUP 35 50 10	35	50	11.0	39	1,9522
MUP 35 55 10	35	55	11.0	39	2,0079
MUP 36 46 7	36	46	8.0	39	1,7569

Koda - Part No.	$d_1^{f8}$ $d^{f7}$	$D_1^{H10}$ $D^{H10}$	$L^{+0.25}$	$M$	€uro
MUP 38 45 5	38	45	5.5	40	1,7569
MUP 38 46 6.5	38	46	7.5	40	1,8685
MUP 38 50 9	38	50	10.0	41	1,9243
MUP 38 55 10	38	55	11.0	41	2,0079
MUP 40 50 5	40	50	5.5	43	1,9243
MUP 40 50 6.5	40	50	7.5	43	1,9243
MUP 40 50 8	40	50	9.0	43	1,9243
MUP 40 50 10	40	50	11.0	43	1,9243
MUP 40 55 10	40	55	11.0	44	1,9801
MUP 40 60 10	40	60	11.0	45	2,0916
MUP 40 60 13	40	60	14.0	45	2,0916
MUP 42 50 6	42	50	7.0	44	1,9243
MUP 42 50 8	42	50	9.0	44	1,9243
MUP 42 52 9	42	52	10.0	45	1,9243
MUP 42 62 12	42	62	13.0	47	2,1195
MUP 45 53 6.5	45	53	7.5	48	1,9243
MUP 45 55 6.5	45	55	7.5	48	1,9801
MUP 45 55 10	45	55	11.0	48	1,9801
MUP 45 60 10	45	60	11.0	49	2,0638
MUP 45 63 10	45	63	11.0	49	2,0916
MUP 45 65 10	45	65	11.0	50	2,1195
MUP 45 65 12	45	65	13.0	50	2,1195
MUP 50 60 10	50	60	11.0	53	2,0638
MUP 50 60 11	50	60	12.0	53	2,0360
MUP 50 62 9	50	62	10.0	53	2,0916
MUP 50 63 6	50	63	7.0	54	2,0916
MUP 50 65 10	50	65	11.0	54	2,1195
MUP 50 70 10	50	70	11.0	55	2,2311
MUP 50 70 12	50	70	13.0	55	2,2311
MUP 53 63 6.5	53	63	7.5	56	2,0916
MUP 55 65 10	55	65	11.0	58	2,1195
MUP 55 65 12	55	65	13.0	58	2,1195
MUP 55 70 12	55	70	13.0	59	2,2032
MUP 55 75 12	55	75	13.0	60	2,2590
MUP 60 70 5	60	70	5.5	63	2,2032
MUP 60 70 8	60	70	9.0	63	2,1195
MUP 60 70 10	60	70	11.0	63	2,1753
MUP 60 70 12	60	70	13.0	63	2,2032
MUP 60 75 10	60	75	11.0	64	2,2590
MUP 60 75 12	60	75	13.0	64	2,3148
MUP 60 80 10	60	80	11.0	65	2,5100
MUP 60 80 12	60	80	13.0	65	2,5100
MUP 63 75 10	63	75	11.0	66	2,2590
MUP 65 75 12	65	75	12.0	68	2,2590
MUP 65 80 10	65	80	11.0	69	2,4263
MUP 65 80 12	65	80	13.0	69	2,4263
MUP 65 85 12	65	85	13.0	70	2,5100
MUP 67 77 10	67	77	11.0	70	2,3985
MUP 70 80 5	70	80	6.0	73	2,3985
MUP 70 80 8	70	80	9.0	73	2,3985
MUP 70 80 10	70	80	11.0	73	2,3985
MUP 70 80 12	70	80	13.0	73	2,4263
MUP 70 85 11	70	85	12.0	74	2,5100
MUP 70 85 12	70	85	13.0	74	2,5100
MUP 70 90 12	70	90	13.0	75	2,5379
MUP 75 90 10	75	90	11.0	79	2,5379
MUP 75 85 12	75	85	13.0	78	2,5100
MUP 75 90 7.5	75	90	8.5	79	2,5100
MUP 75 90 10	75	90	11.0	79	2,5379

<i>Koda - Part No.</i>	$d_1^{f8}$ $d^{f7}$	$D_1^{H10}$ $D^{H10}$	$L^{+0.25}$	$M$	<b>€uro</b>
MUP 75 90 12	75	90	13.0	79	2,5379
MUP 75 95 12	75	95	13.0	80	2,5936
MUP 80 90 5	80	90	6.0	83	2,5379
MUP 80 90 8	80	90	9.0	83	2,5379
MUP 80 90 10	80	90	11.0	83	2,5379
MUP 80 90 12	80	90	13.0	83	2,5379
MUP 80 95 12	80	95	13.0	84	2,5658
MUP 80 100 9.5	80	100	10.5	85	2,5936
MUP 80 100 12	80	100	13.0	85	2,5936
MUP 85 95 8.5	85	95	9.5	88	2,5936
MUP 85 95 12	85	95	13.0	88	2,5936
MUP 85 100 12	85	100	13.0	89	2,6215
MUP 85 105 12	85	105	13.0	90	2,7052
MUP 90 100 8	90	100	9.0	93	2,5936
MUP 90 100 12	90	100	13.0	93	2,6773
MUP 90 105 12	90	105	13.0	94	2,7610
MUP 90 110 12	90	110	13.0	95	2,8726
MUP 95 110 12	95	110	13.0	99	2,7610
MUP 95 115 12	95	115	13.0	100	2,9562
MUP 100 115 12	100	115	13.0	104	2,9562
MUP 100 120 12	100	120	13.0	105	3,2072
MUP 100 125 12	100	125	13.0	105	3,5140
MUP 100 125 15	100	125	16.0	105	3,5140
MUP 105 120 15	105	120	16.0	109	3,2909
MUP 105 125 12	105	125	13.0	110	3,4303
MUP 105 125 15	105	125	16.0	110	3,4303
MUP 110 125 12	110	125	13.0	114	3,4303
MUP 110 125 15	110	125	16.0	114	3,4303
MUP 110 130 15	110	130	16.0	115	3,4582
MUP 115 135 15	115	135	16.0	118	3,7092
MUP 120 140 15	120	140	16.0	125	3,9601
MUP 125 140 11	125	140	12.0	129	3,9043
MUP 125 140 15	125	140	16.0	129	3,9043
MUP 125 145 15	125	145	16.0	130	4,0717
MUP 130 150 15	130	150	16.0	135	4,6574
MUP 140 160 15	140	160	16.0	145	4,9676
MUP 150 170 15	150	170	16.0	155	6,0239
MUP 160 180 15	160	180	16.0	165	6,2470
MUP 170 190 15	170	190	16.0	175	7,1953
MUP 175 200 15	175	200	16.0	180	10,3746
MUP 180 200 15	180	200	16.0	185	9,0917
MUP 200 225 18	200	225	19.0	206	12,1874
MUP 220 250 18	220	250	19.0	225	17,3189

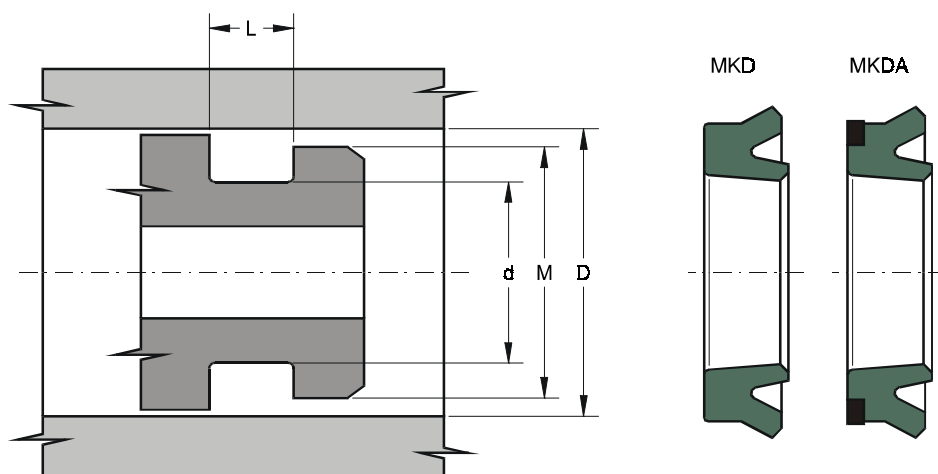
# MPFS

## Tesnilo prirobnice SAE – Seal for SAE flange



Koda - Part No.	$D \pm 0.1$	$H \pm 0.25$	$L \pm 0.07$	€uro
MPFS 1/2"	25.4	4.2	2.85	0,6546
MPFS 3/4"	31.8	4.2	2.85	0,6930
MPFS 1"	39.6	4.2	2.85	0,8409
MPFS 1 1/4"	44.5	4.2	2.85	0,8980
MPFS 1 1/2"	53.7	4.2	2.85	1,1092
MPFS 2"	63.4	4.2	2.85	1,2246

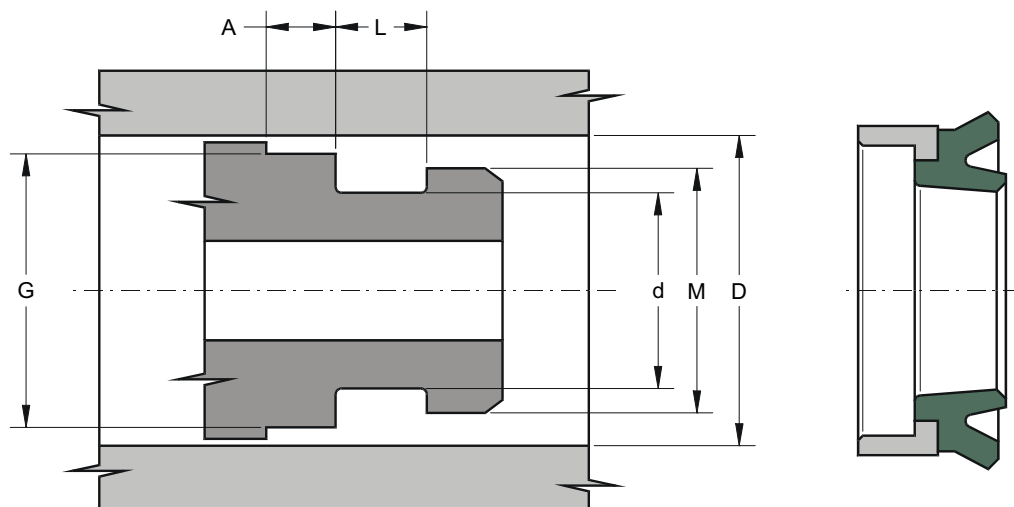
# MKD – MKDA Batno tesnilo z asimetričnim robom – Piston seal with asymmetric lips



Koda - Part No.	$D^{H10}$	$d^{f8}$	$L^{+0.25}$	$M$	€uro
MKD 25 13 7	25	13	8.0	17	1,0877
MKD 30 15 10	30	15	11.0	19	1,2550
MKD 30 22 6	30	22	7.0	25	1,2829
MKD 32 22 10	32	22	11.0	26	1,3387
MKD 35 20 10	35	20	11.0	25	1,4224
MKD 35 22.5 6	35	22.5	7.0	27	1,3387
MKD 35 25 8	35	25	9.0	29	1,3665
MKD 38 31 4.7	38	31	5.2	34	1,3944
MKD 40 25 10	40	25	11.0	30	1,5060
MKD 40 30 6.5	40	30	7.5	34	1,4502
MKD 42 32 10	42	32	11.0	36	1,5060
MKD 45 30 10	45	30	11.0	35	1,7569
MKD 50 35 10	50	35	11.0	40	1,9522
MKD 50 40 5	50	40	5.5	44	1,9243
MKD 50 40 10	50	40	11.0	44	1,9243
MKD 50 42 5.5	50	42	6.0	45	1,9243
MKD 50 42 8	50	42	9.0	45	1,9243
MKD 55 40 10	55	40	11.0	45	1,9801
MKD 60 40 12	60	40	13.0	45	2,0916
MKD 60 40 13.5	60	40	14.5	45	2,0916
MKD 60 50 7	60	50	8.0	54	2,0638
MKD 63 45 10	63	45	11.0	50	2,0916
MKD 63 53 7	63	53	8.0	57	2,0916
MKD 65 45 12	65	45	13.0	50	2,1195
MKD 65 55 10	65	55	11.0	59	2,1195
MKD 70 50 12	70	50	13.0	55	2,2311
MKD 70 60 7	70	60	8.0	64	2,1195
MKD 70 60 12	70	60	13.0	64	2,2032
MKD 75 65 5	75	65	5.5	69	2,2590
MKD 75 65 7	75	65	8.0	69	2,2590
MKD 75 65 10	75	65	11.0	69	2,2590
MKD 80 60 12	80	60	13.0	65	2,5100
MKD 80 60 13.5	80	60	14.5	65	2,5379
MKD 80 70 7	80	70	8.0	74	2,3985
MKD 85 65 13.5	85	65	14.5	70	2,5379
MKD 90 70 12	90	70	13.0	75	2,5379

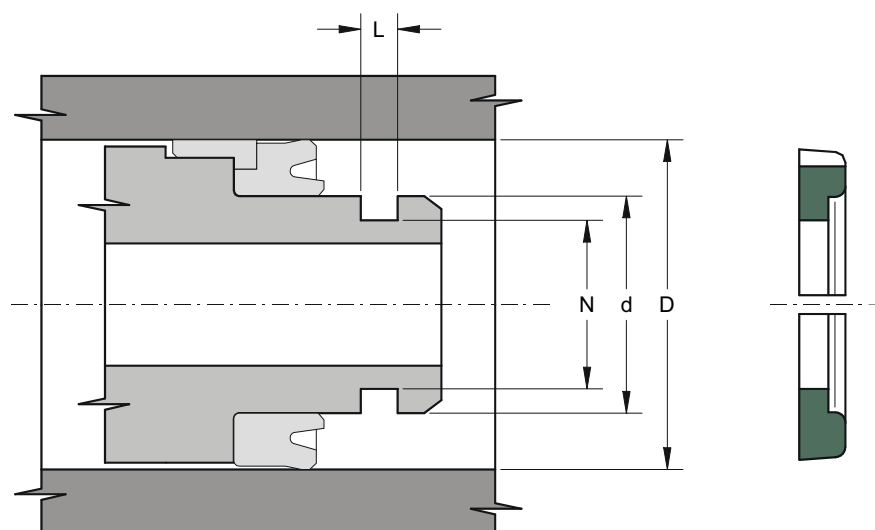
<b>Koda - Part No.</b>	<b>D<sup>H10</sup></b>	<b>d<sup>f8</sup></b>	<b>L<sup>+0.25</sup></b>	<b>M</b>	<b>€uro</b>
<b>MKD 90 70 13.5</b>	90	70	14.5	75	<b>2,5379</b>
<b>MKD 90 75 12</b>	90	75	13.0	80	<b>2,5379</b>
<b>MKD 95 85 7</b>	95	85	8.0	89	<b>2,5936</b>
<b>MKD 100 85 12</b>	100	85	13.0	90	<b>2,6215</b>
<b>MKD 110 100 7</b>	110	100	8.0	104	<b>2,7330</b>
<b>MKD 125 105 12</b>	125	105	13.0	110	<b>3,4303</b>
<b>MKD 180 160 13.5</b>	180	160	14.5	165	<b>6,2470</b>
<b>MKDA 40 25 9</b>	40	25	10.0	33	<b>2,0077</b>
<b>MKDA 70 50 12</b>	70	50	12.0	13	<b>2,7889</b>
<b>MKDA 100 85 14</b>	100	85	14.0	15	<b>3,7371</b>

# MKDF Batno tesnilo z vodilnim obročem – *Piston seal with wear ring*



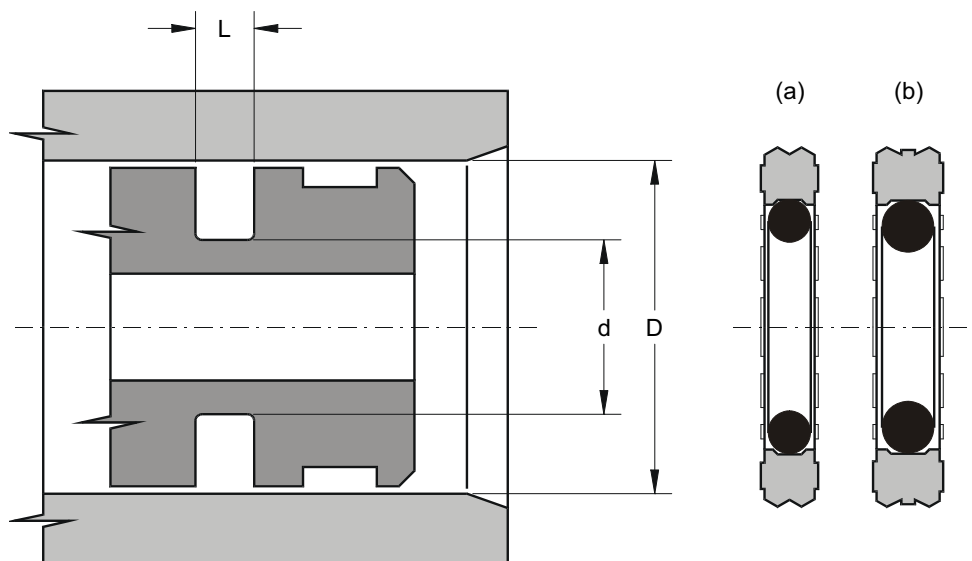
Koda - Part No.	$D^{H10}$	$d^{f8}$	$L^{+0.25}$	$A^{\pm 0.1}$	$G^{-0.05}$	$M$	€uro
MKDF 32 20 8	32	20	9.0	6.35	28.50	25	1,6454
MKDF 35 22 9	35	22	10.0	6.35	31.40	25	1,7569
MKDF 40 25 8.5	40	25	9.5	6.35	35.40	30	2,0079
MKDF 40 26 8.5	40	26	9.5	6.35	35.40	30	2,0079
MKDF 45 30 9	45	30	10.0	6.35	40.40	35	2,2590
MKDF 45 35 8.5	45	35	9.5	6.35	40.40	39	2,2590
MKDF 50 30 13.5	50	30	14.5	6.35	44.30	35	2,3705
MKDF 50 35 10	50	35	11.0	6.35	45.35	40	2,3705
MKDF 50 40 10	50	40	11.0	6.35	45.40	44	2,2590
MKDF 55 40 10	55	40	11.0	6.35	50.35	45	2,3985
MKDF 60 40 13.5	60	40	14.5	6.35	55.40	45	2,5379
MKDF 60 45 10	60	45	11.0	6.35	55.40	50	2,5100
MKDF 63 45 10	63	45	11.0	6.35	58.40	50	2,5100
MKDF 65 50 10	65	50	11.0	6.35	60.40	55	2,6773
MKDF 70 50 13.5	70	50	14.5	6.35	64.20	55	2,8446
MKDF 80 60 12	80	60	13.0	6.35	74.15	65	3,0120
MKDF 90 70 12	90	70	13.0	6.35	84.15	75	3,2072
MKDF 100 80 13.5	100	80	14.5	6.35	93.15	85	3,4303
MKDF 110 95 12	110	95	13.0	6.35	103.10	100	3,6534
MKDF 120 100 13.5	120	100	14.5	6.35	113.10	105	4,0160

# MSP Varnostni obroč – Retaining ring



Koda - Part No.	$D^{H10}$	$d^{+0.1}$	$N^{\pm 0.1}$	$L^{-0.2/+0.1}$	€uro
MSP 32 20	32	20	15.80	3.10	0,5578
MSP 35 22	35	22	17.80	3.10	0,5578
MSP 40 26	40	26	21.60	3.10	0,6135
MSP 45 30	45	30	25.80	3.10	0,6135
MSP 50 30	50	30	25.80	3.35	0,6135
MSP 55 40	55	40	35.80	3.10	0,6135
MSP 60 40	60	40	36.10	3.35	0,6135
MSP 63 45	63	45	40.84	3.10	0,6693
MSP 70 50	70	50	45.84	3.35	0,6693
MSP 90 70	90	70	66.10	3.35	0,8088

# MKPD Dvostransko batno tesnilo – Double acting piston seal

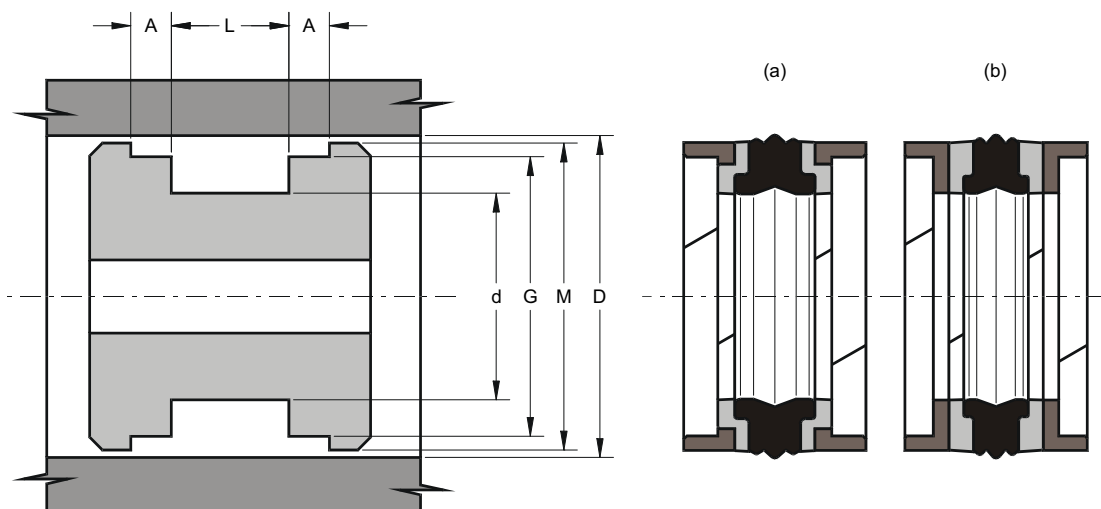


Koda - Part No.	$D^{H9}$	$d^{+0.1}$	$L^{+0.2}$	OR	Tip-Type	€uro
MKPD 15 7.5 3.2	15	7.5	3.2	108	(a)	1,2550
MKPD 16 8.5 3.2	16	8.5	3.2	109	(a)	1,2550
MKPD 20 12.5 3.2	20	12.5	3.2	112	(a)	1,3387
MKPD 22 14.5 3.2	22	14.5	3.2	113	(a)	1,3944
MKPD 25 14 4.2	25	14.0	4.2	207	(b)	1,4224
MKPD 25 17.5 3.2	25	17.5	3.2	115	(a)	1,4224
MKPD 30 22.5 3.2	30	22.5	3.2	118	(a)	1,4781
MKPD 32 21 4.2	32	21.0	4.2	211	(b)	1,5897
MKPD 32 24.5 3.2	32	24.5	3.2	119	(a)	1,5897
MKPD 35 27.5 3.2	35	27.5	3.2	121	(a)	1,7291
MKPD 40 32.5 3.2	40	32.5	3.2	124	(a)	1,7569
MKPD 40 29 4.2	40	29.0	4.2	216	(b)	1,7569
MKPD 40 24.5 6.3	40	24.5	6.3	318	(b)	1,7569
MKPD 45 29.5 6.3	45	29.5	6.3	320	(b)	1,8685
MKPD 45 34 4.2	45	34.0	4.2	219	(b)	1,8685
MKPD 48 37 4.2	48	37.0	4.2	221	(b)	2,0638
MKPD 49 38 4.2	49	38.0	4.2	222	(b)	2,0638
MKPD 50 34.5 6.3	50	34.5	6.3	324	(b)	2,0638
MKPD 50 39 4.2	50	39.0	4.2	222	(b)	2,0638
MKPD 52 36.5 6.3	52	36.5	6.3	324	(b)	2,2032
MKPD 54 43 4.2	54	43.0	4.2	826	(b)	2,3426
MKPD 55 39.5 6.3	55	39.5	6.3	325	(b)	2,3426
MKPD 55 44 4.2	55	44.0	4.2	224	(b)	2,3426
MKPD 60 44.5 6.3	60	44.5	6.3	327	(b)	2,6215
MKPD 60 49 4.2	60	49.0	4.2	225	(b)	2,6215
MKPD 63 47.5 6.3	63	47.5	6.3	328	(b)	2,7052
MKPD 63 52 4.2	63	52.0	4.2	226	(b)	2,7052
MKPD 65 49.5 6.3	65	49.5	6.3	328	(b)	2,8167
MKPD 65 54 4.2	65	54.0	4.2	227	(b)	2,8167
MKPD 70 54.5 6.3	70	54.5	6.3	330	(b)	2,8446
MKPD 70 59 4.2	70	59.0	4.2	228	(b)	2,8446
MKPD 75 59.5 6.3	75	59.5	6.3	331	(b)	3,0956
MKPD 75 64 4.2	75	64.0	4.2	230	(b)	3,0956
MKPD 80 64.5 6.3	80	64.5	6.3	333	(b)	3,2351
MKPD 80 69 4.2	80	69.0	4.2	842	(b)	3,2351
MKPD 85 69.5 6.3	85	69.5	6.3	335	(b)	3,6534
MKPD 90 74.5 6.3	90	74.5	6.3	336	(b)	3,7929

<b>Koda - Part No.</b>	<b><math>D^{H9}</math></b>	<b><math>d^{+0.1}</math></b>	<b><math>L^{+0.2}</math></b>	<b>OR</b>	<b>Tip-Type</b>	<b>€uro</b>
<b>MKPD 100 84.5 6.3</b>	100	84.5	6.3	339	(b)	<b>4,3227</b>
<b>MKPD 110 94.5 6.3</b>	110	94.5	6.3	343	(b)	<b>4,7968</b>
<b>MKPD 120 104.5 6.3</b>	120	104.5	6.3	346	(b)	<b>5,1872</b>
<b>MKPD 125 109.5 6.3</b>	125	109.5	6.3	347	(b)	<b>5,8566</b>
<b>MKPD 130 114.5 6.3</b>	130	114.5	6.3	349	(b)	<b>5,9403</b>
<b>MKPD 140 119 8.1</b>	140	119.0	8.1	426	(b)	<b>6,4980</b>
<b>MKPD 150 129 8.1</b>	150	129.0	8.1	430	(b)	<b>7,2790</b>
<b>MKPD 160 139 8.1</b>	160	139.0	8.1	433	(b)	<b>7,5578</b>
<b>MKPD 170 149 8.1</b>	170	149.0	8.1	436	(b)	<b>8,3108</b>
<b>MKPD 180 159 8.1</b>	180	159.0	8.1	438	(b)	<b>8,8686</b>
<b>MKPD 200 179 8.1</b>	200	179.0	8.1	441	(b)	<b>10,2909</b>
<b>MKPD 250 229 8.1</b>	250	229.0	8.1	447	(b)	<b>19,4384</b>

# MKGD

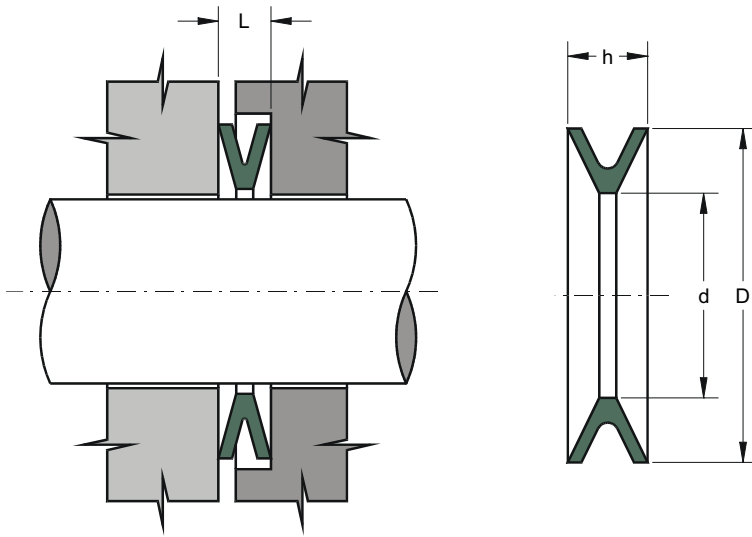
## Dvostransko batno tesnilo z vodilnim obročem – *Double acting seal with wear rings*



Koda - Part No.	$D^{H10}$	$d^{+0.1}$	$L^{+0.2}$	$A^{\pm 0.1}$	$G^{-0.05}$	$M^{\pm 0.2}$	Tip-Type	€uro
MKGD 20 11	20	11	13.5	2.10	17.00	19.0	(a)	2,4542
MKGD 25 15	25	15	16.4	6.35	21.45	23.5	(a)	2,5100
MKGD 25 15/A	25	15	12.0	4.00	21.00	23.0	(a)	2,5100
MKGD 25 15/B	25	15	12.5	4.00	22.00	24.0	(a)	2,5100
MKGD 25 16	25	16	13.5	2.10	22.00	24.0	(a)	2,5100
MKGD 30 17	30	17	15.4	6.35	26.50	29.0	(a)	3,0120
MKGD 30 21	30	21	13.5	2.10	27.00	29.0	(a)	2,5658
MKGD 32 22	32	22	16.4	6.35	28.50	30.5	(a)	2,6773
MKGD 32 22/A	32	22	15.5	2.60	28.00	31.0	(a)	2,6773
MKGD 32 24	32	24	15.5	3.20	28.00	31.4	(b)	2,6773
MKGD 35 25	35	25	16.4	6.35	31.40	33.5	(a)	2,8446
MKGD 35 25/A	35	25	15.5	2.60	31.00	34.0	(a)	2,8446
MKGD 40 24	40	24	18.4	6.35	35.40	38.5	(a)	3,0120
MKGD 40 26	40	26	15.5	2.60	36.00	39.0	(a)	3,0120
MKGD 40 30	40	30	16.4	6.35	35.40	38.5	(a)	3,0120
MKGD 40 30/A	40	30	12.5	4.00	36.00	38.0	(a)	3,0120
MKGD 40 30/B	40	30	12.5	4.00	37.00	39.0	(a)	3,0120
MKGD 40 32	40	32	15.5	3.20	36.00	39.4	(b)	3,0120
MKGD 45 29	45	29	18.4	6.35	40.40	43.7	(a)	3,1236
MKGD 45 31	45	31	15.5	2.60	41.00	44.0	(a)	3,1236
MKGD 45 35	45	35	16.4	6.35	40.40	43.5	(a)	3,1236
MKGD 50 34	50	34	18.4	6.35	45.40	48.5	(a)	3,4582
MKGD 50 34/A	50	34	20.5	3.10	46.00	49.0	(a)	3,4582
MKGD 50 38	50	38	20.5	4.20	46.00	49.4	(b)	3,4582
MKGD 55 39	55	39	18.4	6.35	50.36	53.5	(a)	3,6534
MKGD 55 39/A	55	39	20.5	3.10	51.00	54.0	(a)	3,6534
MKGD 60 44	60	44	18.4	6.35	55.40	58.5	(a)	3,9601
MKGD 60 44/A	60	44	20.5	3.10	56.00	59.0	(a)	3,9601
MKGD 60 48	60	48	20.5	4.20	56.00	59.4	(b)	3,9601
MKGD 63 47	63	47	18.4	6.35	58.40	61.5	(a)	4,0997
MKGD 63 47/A	63	47	20.5	3.10	59.00	62.0	(a)	4,0997
MKGD 63 47/B	63	47	19.4	6.35	58.40	61.5	(a)	4,0997
MKGD 63 51	63	51	20.5	4.20	59.00	62.4	(b)	4,0997
MKGD 65 49	65	49	20.5	3.10	61.00	64.0	(a)	4,2391
MKGD 65 50	65	50	18.4	6.35	60.40	63.5	(a)	4,2391
MKGD 70 50	70	50	22.4	6.35	64.20	68.3	(a)	4,4622

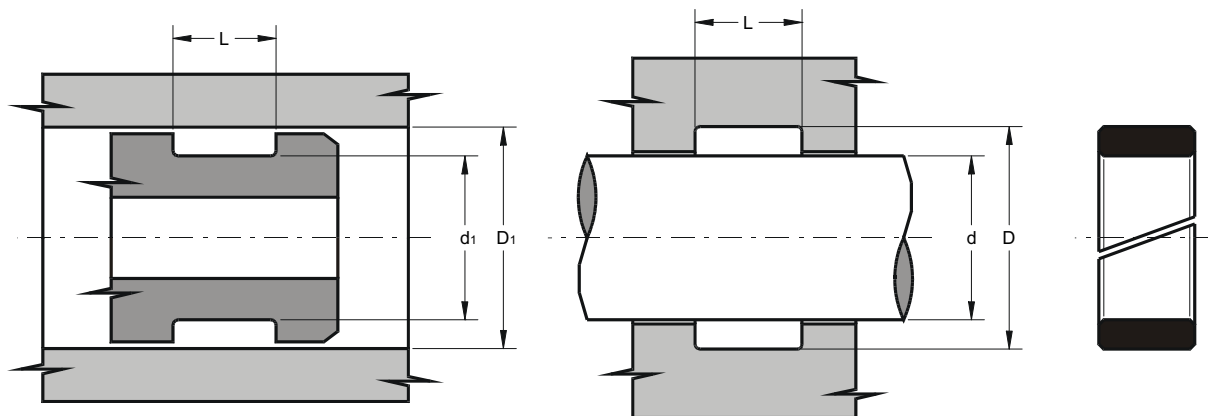
<b>Koda - Part No.</b>	<b>D <sup>H10</sup></b>	<b>d <sup>+0.1</sup></b>	<b>L <sup>+0.2</sup></b>	<b>A <sup>±0.1</sup></b>	<b>G <sup>-0.05</sup></b>	<b>M <sup>±0.2</sup></b>	<b>Tip-Type</b>	<b>€uro</b>
MKGD 70 54	70	54	20.5	3.10	66.00	69.0	(a)	4,4622
MKGD 70 58	70	58	20.5	4.20	66.00	69.4	(b)	4,4622
MKGD 75 55	75	55	22.4	6.35	69.20	73.3	(a)	4,6017
MKGD 75 59	75	59	20.5	3.10	71.00	74.0	(a)	4,8247
MKGD 80 60	80	60	22.4	6.35	74.15	78.3	(a)	4,8805
MKGD 80 62	80	62	22.5	3.60	76.00	79.0	(a)	4,8805
MKGD 80 66	80	66	22.5	5.20	76.00	79.4	(b)	4,8805
MKGD 85 65	85	65	22.4	6.35	79.15	83.3	(a)	5,1872
MKGD 90 70	90	70	22.4	6.35	84.15	88.3	(a)	5,6335
MKGD 90 72	90	72	22.5	3.60	86.00	89.0	(a)	5,6335
MKGD 90 76	90	76	22.5	5.20	86.00	89.4	(b)	5,6335
MKGD 95 75	95	75	22.4	6.35	89.15	93.3	(a)	5,8288
MKGD 100 75	100	75	22.4	6.35	93.15	98.0	(a)	6,3029
MKGD 100 80	100	80	25.4	6.35	94.15	98.3	(a)	6,3029
MKGD 100 82	100	82	22.5	3.60	96.00	99.0	(a)	6,3029
MKGD 100 86	100	86	22.5	5.20	96.00	99.4	(b)	6,3029
MKGD 105 80	105	80	22.4	6.35	98.10	103.0	(a)	6,4702
MKGD 110 85	110	85	22.4	6.35	103.10	108.0	(a)	7,0000
MKGD 110 92	110	92	22.5	3.60	106.00	109.0	(a)	7,0000
MKGD 110 96	110	96	22.5	5.20	106.00	109.4	(b)	7,0000
MKGD 115 90	115	90	22.4	6.35	108.10	113.0	(a)	7,0559
MKGD 120 95	120	95	22.4	6.35	113.10	118.1	(a)	7,3068
MKGD 120 106	120	106	22.5	5.20	116.00	119.4	(b)	7,1116
MKGD 125 100	125	100	25.4	6.35	118.10	123.0	(a)	7,5020
MKGD 125 103	125	103	26.5	5.10	121.00	124.0	(a)	7,5020
MKGD 125 108	125	108	26.5	7.20	121.00	124.4	(b)	7,5020
MKGD 130 105	130	105	25.4	9.50	122.60	127.5	(a)	8,3387
MKGD 130 105/A	130	105	25.4	6.35	123.10	128.0	(a)	8,3387
MKGD 135 110	135	110	25.4	9.50	127.60	132.5	(a)	8,8407
MKGD 135 110/A	135	110	25.4	6.35	128.10	133.0	(a)	8,8407
MKGD 140 115	140	115	25.4	9.50	132.60	137.5	(a)	9,1754
MKGD 140 115/A	140	115	25.4	6.35	133.00	138.0	(a)	9,1754
MKGD 140 118	140	118	26.5	5.10	136.00	139.0	(a)	9,1754
MKGD 140 123	140	123	26.5	7.20	136.00	139.4	(b)	9,1754
MKGD 145 120	145	120	25.4	9.50	137.60	142.5	(a)	9,5379
MKGD 145 120/A	145	120	25.4	6.35	138.30	142.95	(a)	9,5379
MKGD 150 125	150	125	25.4	9.50	142.60	147.5	(a)	9,7332
MKGD 150 125/A	150	125	25.4	6.35	143.00	148.0	(a)	9,7332
MKGD 160 130	160	130	25.4	6.35	153.00	157.5	(a)	11,2670
MKGD 160 130/A	160	130	25.4	9.50	152.60	157.5	(a)	11,2670
MKGD 160 135	160	135	25.4	9.50	152.60	157.5	(a)	10,8487
MKGD 170 145	170	145	25.4	12.70	161.70	167.1	(a)	11,5738
MKGD 175 150	175	150	25.4	12.70	166.70	172.1	(a)	11,8248
MKGD 180 155	180	155	25.4	12.70	171.70	177.1	(a)	12,0200
MKGD 185 160	185	160	25.4	12.70	176.70	182.1	(a)	12,4941
MKGD 190 165	190	165	25.4	12.70	181.70	187.0	(a)	12,9961
MKGD 200 175	200	175	25.4	12.70	191.60	197.0	(a)	16,3985
MKGD 220 195	220	195	25.4	12.70	211.60	217.0	(a)	25,6576
MKGD 250 220	250	220	35.4	6.35	242.90	247.9	(a)	36,8131
MKGD 250 225	250	225	25.4	12.70	241.60	247.0	(a)	31,5700
MKGD 2000 1375	50.80	34.92	19.05	6.35	46.23	49.48	(a)	3,4861
MKGD 2375 1750	60.33	44.45	19.05	6.35	55.73	58.98	(a)	3,9601
MKGD 2500 1875	63.50	47.62	19.05	6.35	58.90	62.12	(a)	4,0997
MKGD 3000 2250	76.20	57.15	23.79	6.35	70.40	74.50	(a)	4,6017
MKGD 4000 3250	101.60	82.55	23.79	6.35	95.78	99.92	(a)	6,4702

# MDV V-Tesnilo – V-Ring



Koda - Part No.	D	d	h	L	€uro
MDV 27.5	27.5	22.5	4.0	2.0	1,3944
MDV 32	32.0	26.0	4.0	2.0	1,3944
MDV 38.5	38.5	31.0	4.5	2.0	1,6734
MDV 43	43.0	36.0	5.0	2.0	1,8406
MDV 51	51.0	42.0	6.0	2.5	2,0916
MDV 71	71.0	59.0	7.0	3.5	2,5379
MDV 80	80.0	65.0	7.0	3.5	2,6215
MDV 86	86.0	71.0	9.0	4.0	2,7889
MDV 88.8	88.8	70.0	8.0	3.5	2,7889
MDV 186	186.0	160.0	16.0	7.5	8,0878

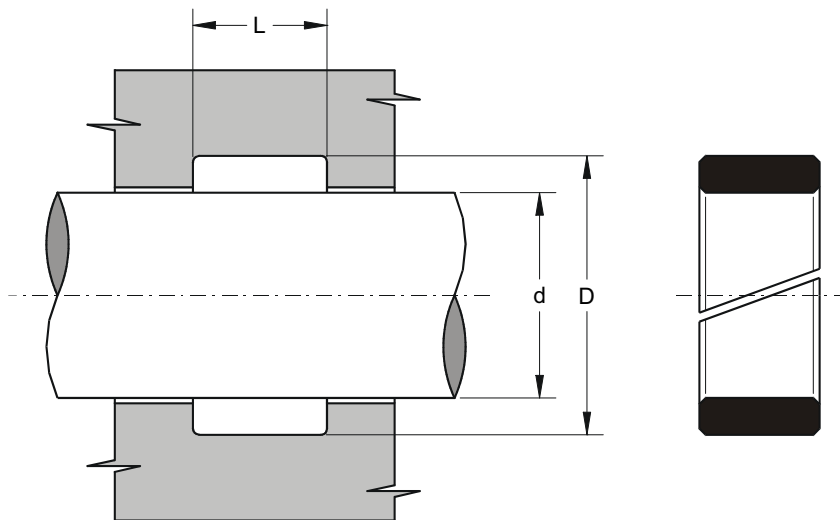
# MFR Vodilni obroč batnice in bata – Rod and piston guide ring



Koda - Part No.	$d_1^{-0.05}$ $d^{f7}$	$D_1^{H8}$ $D^{+0.05}$	$L^{+0.25}$	€uro
MFR 20 25 5.6	20	25	5.6	0,4463
MFR 25 30 5.6	25	30	5.6	0,4463
MFR 27 32 5.6	27	32	5.6	0,4463
MFR 30 35 5.6	30	35	5.6	0,4463
MFR 35 40 5.6	35	40	5.6	0,5298
MFR 36 41 5.6	36	41	5.6	0,5298
MFR 40 45 5.6	40	45	5.6	0,5298
MFR 45 50 5.6	45	50	5.6	0,5298
MFR 50 55 5.6	50	55	5.6	0,5298
MFR 55 60 5.6	55	60	5.6	0,5578
MFR 58 63 5.6	58	63	5.6	0,5578
MFR 60 65 5.6	60	65	5.6	0,5857
MFR 65 70 5.6	65	70	5.6	0,6135
MFR 67 72 5.6	67	72	5.6	0,6135
MFR 70 75 5.6	70	75	5.6	0,6414
MFR 75 80 5.6	75	80	5.6	0,6414
MFR 80 85 5.6	80	85	5.6	0,6414
MFR 85 90 5.6	85	90	5.6	0,6693
MFR 90 95 5.6	90	95	5.6	0,6693
MFR 95 100 5.6	95	100	5.6	0,7530
MFR 100 105 5.6	100	105	5.6	0,8088
MFR 120 125 5.6	120	125	5.6	0,8645
MFR 25 30 9.7	25	30	9.7	0,4463
MFR 30 35 9.7	30	35	9.7	0,4463
MFR 35 40 9.7	35	40	9.7	0,5298
MFR 40 45 9.7	40	45	9.7	0,5298
MFR 45 50 9.7	45	50	9.7	0,5298
MFR 50 55 9.7	50	55	9.7	0,5578
MFR 55 60 9.7	55	60	9.7	0,5578
MFR 58 63 9.7	58	63	9.7	0,5578
MFR 60 65 9.7	60	65	9.7	0,6135
MFR 65 70 9.7	65	70	9.7	0,6135
MFR 70 75 9.7	70	75	9.7	0,6414
MFR 75 80 9.7	75	80	9.7	0,6414

<b>Koda - Part No.</b>	$d_1^{-0.05}$ $d^{f7}$	$D_1^{H8}$ $D^{+0.05}$	$L^{+0.25}$	<b>€uro</b>
<b>MFR 80 85 9.7</b>	80	85	9.7	<b>0,6414</b>
<b>MFR 85 90 9.7</b>	85	90	9.7	<b>0,6972</b>
<b>MFR 90 95 9.7</b>	90	95	9.7	<b>0,6972</b>
<b>MFR 92 97 9.7</b>	92	97	9.7	<b>0,8088</b>
<b>MFR 95 100 9.7</b>	95	100	9.7	<b>0,8088</b>
<b>MFR 100 105 9.7</b>	100	105	9.7	<b>0,8088</b>
<b>MFR 105 110 9.7</b>	105	110	9.7	<b>0,8645</b>
<b>MFR 110 115 9.7</b>	110	115	9.7	<b>0,8924</b>
<b>MFR 120 125 9.7</b>	120	125	9.7	<b>0,8924</b>
<b>MFR 130 135 9.7</b>	130	135	9.7	<b>1,0040</b>
<b>MFR 46 50 10.2</b>	46	50	10.2	<b>0,6192</b>
<b>MFR 56 60 10.2</b>	46	60	10.2	<b>0,6844</b>
<b>MFR 66 70 10.2</b>	66	70	10.2	<b>0,8640</b>

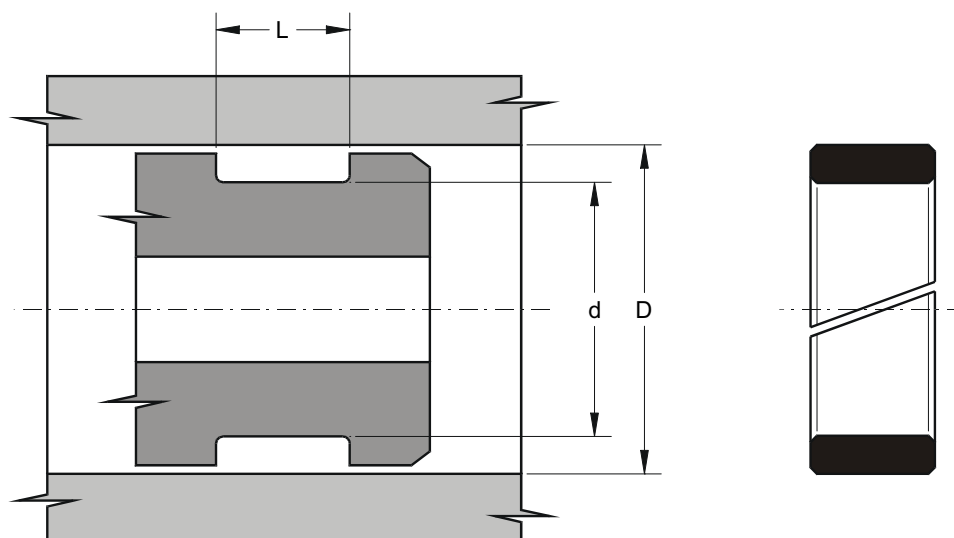
# MFI Vodilni obroč batnice – Rod guide ring



Koda - Part No.	$d^{f7}$	$D^{+0.05}$	$L^{+0.25}$	€uro
MFI 12	12	16	9.6	0,3904
MFI 14	14	18	9.6	0,3904
MFI 15	15	19	9.6	0,4463
MFI 16	16	20	9.6	0,4463
MFI 18	18	22	9.6	0,4463
MFI 20	20	24	9.6	0,4741
MFI 22	22	26	9.6	0,4741
MFI 25	25	29	9.6	0,4741
MFI 25 31 9.6	25	31	9.6	0,4741
MFI 26	26	30	9.6	0,4741
MFI 28	28	32	9.6	0,4741
MFI 30	30	34	9.6	0,4741
MFI 30 36 9.6	30	36	9.6	0,5298
MFI 32	32	36	9.6	0,5298
MFI 32 38 10	32	38	10.0	0,5298
MFI 34	34	38	9.6	0,5298
MFI 35	35	39	9.6	0,5298
MFI 35 41 9.6	35	41	9.6	0,5298
MFI 36	36	40	9.6	0,5298
MFI 36 42 9.6	36	42	9.6	0,5298
MFI 38	38	42	9.6	0,5298
MFI 40	40	44	9.6	0,5298
MFI 40 46 9.6	40	46	9.6	0,5298
MFI 42	42	46	9.6	0,5298
MFI 45	45	51	9.6	0,5298
MFI 45 51 12.8	45	51	12.8	0,5298
MFI 46	46	52	9.6	0,5298
MFI 48	48	54	9.6	0,5298
MFI 50	50	56	9.6	0,5578
MFI 50 56 12.8	50	56	12.8	0,5578
MFI 52	52	58	9.6	0,5578
MFI 53	53	59	9.6	0,5578
MFI 55	55	61	9.6	0,5578
MFI 55 61 12.8	55	61	12.8	0,5578
MFI 56	56	62	12.8	0,5857
MFI 60	60	66	12.8	0,6135
MFI 63	63	69	12.8	0,6135

<i>Koda - Part No.</i>	<i>d<sup>f7</sup></i>	<i>D<sup>+0.05</sup></i>	<i>L<sup>+0.25</sup></i>	<i>€uro</i>
MFI 65	65	71	12.8	0,6135
MFI 70	70	76	12.8	0,6972
MFI 72	72	78	12.8	0,6972
MFI 75	75	81	12.8	0,7251
MFI 76	76	82	12.8	0,7251
MFI 80	80	86	12.8	0,7251
MFI 85	85	91	12.8	0,8367
MFI 90	90	96	12.8	0,9482
MFI 95	95	101	12.8	0,9761
MFI 100	100	106	12.8	1,0040
MFI 105	105	111	12.8	1,0318
MFI 110	110	116	12.8	1,0598
MFI 115	115	121	12.8	1,0877
MFI 120	120	126	12.8	1,1155
MFI 125	125	131	12.8	1,1155
MFI 130	130	136	12.8	1,1434
MFI 135	135	141	12.8	1,1714
MFI 140	140	146	12.8	1,2271
MFI 145	145	151	12.8	1,5060
MFI 150	150	156	12.8	1,6734
MFI 155	155	161	19.2	1,8406
MFI 160	160	166	19.2	2,0638
MFI 165	165	171	19.2	2,0916
MFI 170	170	176	19.2	2,1753
MFI 175	175	181	19.2	2,1753
MFI 180	180	186	19.2	2,2311
MFI 185	185	191	19.2	2,3985
MFI 190	190	196	19.2	2,4542
MFI 195	195	201	19.2	2,4821
MFI 200	200	206	19.2	2,5100
MFI 205	205	211	19.2	2,5658
MFI 210	210	216	19.2	2,6215
MFI 215	215	221	19.2	2,6773
MFI 220	220	226	19.2	2,7889
MFI 225	225	231	19.2	3,0677
MFI 230	230	236	19.2	3,2909
MFI 235	235	241	19.2	3,5419
MFI 240	240	246	19.2	3,7650
MFI 245	245	251	19.2	4,0160
MFI 250	250	256	19.2	4,1833

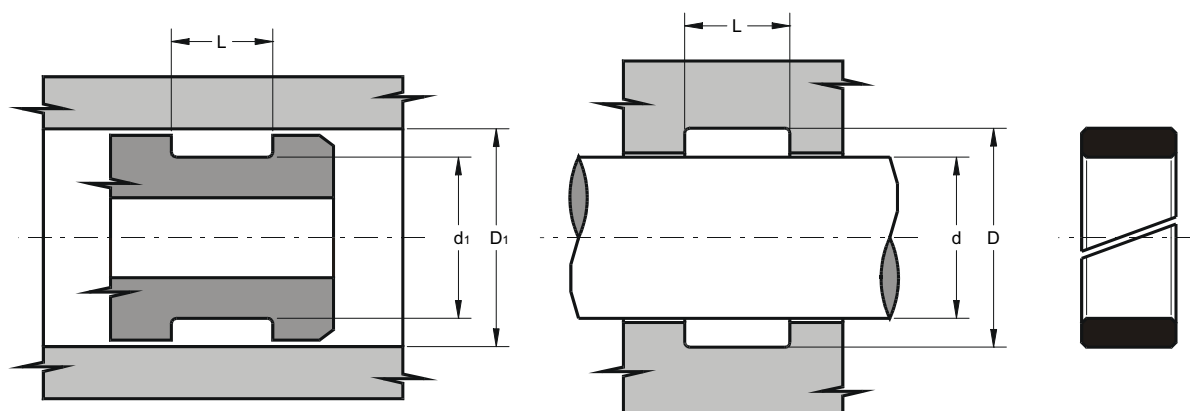
# MFE Vodilni obroč bata – Piston guide ring



Koda - Part No.	$D^{H8}$	$d^{-0.05}$	$L^{+0.25}$	€uro
MFE 16	16	12	9.6	0,3904
MFE 18	18	14	9.6	0,3904
MFE 20	20	16	9.6	0,4463
MFE 22	22	18	9.6	0,4463
MFE 24	24	20	9.6	0,4741
MFE 25 19 9.6	25	19	9.6	0,4741
MFE 25	25	21	9.6	0,4741
MFE 28	28	24	9.6	0,4741
MFE 30	30	26	9.6	0,4741
MFE 32	32	28	9.6	0,4741
MFE 34	34	30	9.6	0,4741
MFE 35	35	31	9.6	0,4741
MFE 36	36	32	9.6	0,5298
MFE 40	40	36	9.6	0,5298
MFE 42	42	38	9.6	0,4978
MFE 45	45	41	9.6	0,5298
MFE 49	49	43	9.6	0,5298
MFE 50	50	44	9.6	0,5298
MFE 55	55	49	12.8	0,5298
MFE 60	60	54	12.8	0,5298
MFE 63	63	57	12.8	0,5857
MFE 65	65	59	12.8	0,5857
MFE 70	70	64	12.8	0,6135
MFE 75	75	69	12.8	0,6972
MFE 80	80	74	12.8	0,6972
MFE 85	85	79	12.8	0,7251
MFE 90 84 10/S	90	84	10.0	0,8367
MFE 90	90	84	12.8	0,8367
MFE 94	94	88	12.8	0,9482
MFE 95	95	89	12.8	0,9482
MFE 100	100	94	12.8	0,9761
MFE 105	105	99	12.8	1,0040
MFE 110	110	104	12.8	1,0318
MFE 115	115	109	12.8	1,0598
MFE 120	120	114	12.8	1,0877
MFE 125	125	119	12.8	1,1155

<i>Koda - Part No.</i>	<i>D<sup>H8</sup></i>	<i>d<sup>-0.05</sup></i>	<i>L<sup>+0.25</sup></i>	<i>€uro</i>
MFE 126	126	120	12.8	1,1155
MFE 130	130	124	12.8	1,1155
MFE 135	135	129	12.8	1,1434
MFE 140	140	134	12.8	1,1714
MFE 145	145	139	12.8	1,2271
MFE 150	150	144	12.8	1,3944
MFE 155	155	149	19.2	1,6734
MFE 160	160	154	19.2	1,8406
MFE 165	165	159	19.2	2,0638
MFE 170	170	164	19.2	2,0916
MFE 175	175	169	19.2	2,1753
MFE 180	180	174	19.2	2,1753
MFE 185	185	179	19.2	2,2311
MFE 190	190	184	19.2	2,3985
MFE 195	195	189	19.2	2,4542
MFE 200	200	194	19.2	2,4821
MFE 210	210	204	19.2	2,5658
MFE 220	220	214	19.2	2,6773
MFE 230	230	224	19.2	3,0677
MFE 240	240	234	19.2	3,5419
MFE 250	250	244	19.2	4,0160

# MGRF Vodilni obroč – Phenolic wear ring

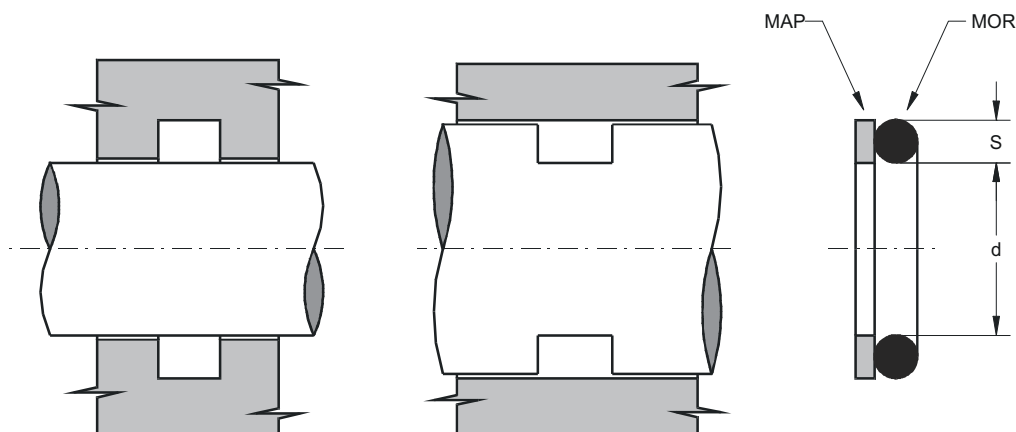


Koda - Part No.	$d_1^{h8}$ $d^{f8}$	$D_1^{H9}$ $D^{H8}$	$L^{+0.2}$	€uro
MGRF 20 25 9.7	20	25	9.7	4,5180
MGRF 25 30 9.7	25	30	9.7	4,7411
MGRF 30 35 9.7	30	35	9.7	4,8805
MGRF 35 40 9.7	35	40	9.7	5,0869
MGRF 40 45 9.7	40	45	9.7	5,1872
MGRF 45 50 9.7	45	50	9.7	5,3546
MGRF 50 55 9.7	50	55	9.7	6,0239
MGRF 55 60 9.7	55	60	9.7	6,2916
MGRF 58 63 9.7	58	63	9.7	6,4256
MGRF 60 65 9.7	60	65	9.7	6,5594
MGRF 65 70 9.7	65	70	9.7	6,8271
MGRF 70 75 9.7	70	75	9.7	7,0948
MGRF 75 80 9.7	75	80	9.7	7,2288
MGRF 80 85 9.7	80	85	9.7	7,5300
MGRF 85 90 9.7	85	90	9.7	7,8980
MGRF 90 95 9.7	90	95	9.7	8,3387
MGRF 95 100 9.7	95	100	9.7	8,6455
MGRF 100 105 9.7	100	105	9.7	9,0917
MGRF 105 110 9.7	105	110	9.7	9,9061
MGRF 110 115 9.7	110	115	9.7	10,1738
MGRF 115 120 9.7	115	120	9.7	10,3076
MGRF 120 125 9.7	120	125	9.7	10,8431
MGRF 125 130 9.7	125	130	9.7	10,9490
MGRF 130 135 9.7	130	135	9.7	11,4344
MGRF 135 140 9.7	135	140	9.7	12,0479
MGRF 140 145 9.7	140	145	9.7	12,2711
MGRF 145 150 9.7	145	150	9.7	12,5834
MGRF 150 155 9.7	150	155	9.7	13,0519
MGRF 155 160 9.7	155	160	9.7	13,3866
MGRF 160 165 9.7	160	165	9.7	14,0001
MGRF 175 180 9.7	175	180	9.7	16,3317
MGRF 55 60 15	55	60	15.0	8,1658
MGRF 60 65 15	60	65	15.0	8,8352
MGRF 65 70 15	65	70	15.0	9,1029
MGRF 70 75 15	70	75	15.0	9,5044

<i>Koda - Part No.</i>	$d_1^{h8}$ $d^{f8}$	$D_1^{H9}$ $D^{H8}$	$L^{+0.2}$	<b>€uro</b>
MGRF 75 80 15	75	80	15.0	<b>9,7722</b>
MGRF 80 85 15	80	85	15.0	<b>10,1738</b>
MGRF 85 90 15	85	90	15.0	<b>10,5754</b>
MGRF 90 95 15	90	95	15.0	<b>10,8431</b>
MGRF 95 100 15	95	100	15.0	<b>11,4344</b>
MGRF 100 105 15	100	105	15.0	<b>11,7802</b>
MGRF 105 110 15	105	110	15.0	<b>12,7172</b>
MGRF 110 115 15	110	115	15.0	<b>13,1189</b>
MGRF 115 120 15	115	120	15.0	<b>13,3866</b>
MGRF 120 125 15	120	125	15.0	<b>13,7881</b>
MGRF 125 130 15	125	130	15.0	<b>14,1898</b>
MGRF 130 135 15	130	135	15.0	<b>15,1268</b>
MGRF 135 140 15	135	140	15.0	<b>15,3945</b>
MGRF 140 145 15	140	145	15.0	<b>14,1898</b>
MGRF 145 150 15	145	150	15.0	<b>16,3317</b>
MGRF 150 155 15	150	155	15.0	<b>16,7332</b>
MGRF 155 160 15	155	160	15.0	<b>18,0719</b>
MGRF 160 165 15	160	165	15.0	<b>18,3396</b>
MGRF 165 170 15	165	170	15.0	<b>19,2767</b>
MGRF 170 175 15	170	175	15.0	<b>20,0798</b>
MGRF 175 180 15	175	180	15.0	<b>20,7492</b>
MGRF 180 185 15	180	185	15.0	<b>21,4743</b>
MGRF 185 190 15	185	190	15.0	<b>21,8201</b>
MGRF 190 195 15	190	195	15.0	<b>22,2216</b>
MGRF 195 200 15	195	200	15.0	<b>24,8990</b>

# MOR – MAP

## O-Tesnilo in podporni obroč – O-Ring and antiextrusion ring



<b>Koda - Dimenzija MOR-MAP</b>	<b>Cod. GB Other Ref.</b>	<b>S</b>	<b>d</b>	<b>MOR Euro</b>	<b>MAP Euro</b>
004	2007	1.78	1.78	0,0613	
005	2010	1.78	2.57	0,0613	
006	2012	1.78	2.90	0,0613	
007	2015	1.78	3.68	0,0613	
008	2018	1.78	4.47	0,0613	
009	2021	1.78	5.28	0,0613	
010	2025	1.78	6.07	0,0613	0,5578
610	106	1.78	6.75	0,0613	0,5578
011	2031	1.78	7.65	0,0613	0,5578
611	108	1.78	8.73	0,0613	
012	2037	1.78	9.25	0,0613	0,5578
013	2043	1.78	10.82	0,0837	0,5578
806	114	1.78	11.11	0,0837	
014	2050	1.78	12.42	0,0837	0,5578
015	2056	1.78	14.00	0,0837	0,5857
016	2062	1.78	15.60	0,0837	0,5857
017	2068	1.78	17.17	0,1004	0,5857
018	2075	1.78	18.77	0,1004	0,6135
019	2081	1.78	20.35	0,1004	0,6135
020	2087	1.78	21.95	0,1004	0,6135
021	2093	1.78	23.52	0,1227	
022	2100	1.78	25.12	0,1227	0,6414
023	2106	1.78	26.70	0,1227	0,6414
024	2112	1.78	28.30	0,1283	0,6414
025	2118	1.78	29.87	0,1338	
026	2125	1.78	31.47	0,1338	0,6414
027	2131	1.78	33.05	0,1394	
028	2137	1.78	34.65	0,1394	
029	2150	1.78	37.82	0,1896	0,7251
030	2162	1.78	41.00	0,2008	
031	2175	1.78	44.17	0,2175	

<b>Koda - Dimenzija MOR-MAP</b>	<b>Cod. GB Other Ref.</b>	<b>S</b>	<b>d</b>	<b>MOR Euro</b>	<b>MAP Euro</b>
032	2187	1.78	47.35	0,2621	0,8088
033	2200	1.78	50.52	0,2621	
034	2212	1.78	53.70	0,2621	
035	2225	1.78	56.87	0,2621	
036	2237	1.78	60.05	0,2789	
037	2250	1.78	63.22	0,2956	
038	2262	1.78	66.40	0,3235	
039	2275	1.78	69.57	0,3235	
040	2287	1.78	72.75	0,3514	
041	2300	1.78	75.92	0,3569	
042	2325	1.78	82.27	0,3626	
043	2350	1.78	88.62	0,3626	
044	2375	1.78	94.97	0,4406	
045	2400	1.78	101.32	0,4406	
046	2425	1.78	107.67	0,6359	
047	2450	1.78	114.02	0,6359	
048	2475	1.78	120.37	0,7641	
049	2500	1.78	126.72	0,8869	
107	-	2.62	5.23	0,0837	
108	-	2.62	6.02	0,0837	
109	-	2.62	7.60	0,0837	0,5578
110	3037	2.62	9.19	0,0837	0,5578
613	112	2.62	9.92	0,0837	0,5578
111	3043	2.62	10.77	0,0837	0,5578
614	115	2.62	11.91	0,0837	0,5578
112	3050	2.62	12.37	0,0837	0,5578
615	117	2.62	13.10	0,0837	
113	3056	2.62	13.94	0,0837	0,5578
616	119	2.62	15.08	0,0837	0,5578
114	3062	2.62	15.54	0,0837	0,5857
809	121	2.62	15.88	0,1116	0,5857
115	3068	2.62	17.12	0,1116	0,5857
617	123	2.62	17.86	0,1116	0,5857
116	3075	2.62	18.72	0,1116	0,5857
117	3081	2.62	20.29	0,1116	0,5857
812	128	2.62	20.63	0,1116	0,5857
118	3087	2.62	21.89	0,1116	0,5857
813	130	2.62	22.22	0,1116	0,5857
119	3093	2.62	23.47	0,1283	0,6414
814	132	2.62	23.81	0,1283	0,6414
120	3100	2.62	25.07	0,1283	0,6414
121	3106	2.62	26.64	0,1283	0,6693
122	3112	2.62	28.24	0,1338	0,6693
123	3118	2.62	29.82	0,1338	0,6693
124	3125	2.62	31.42	0,1338	0,6693
125	3131	2.62	32.99	0,1338	0,7251
126	3137	2.62	34.60	0,1338	0,7251
127	3143	2.62	36.14	0,1506	0,7251
128	3150	2.62	37.77	0,1506	0,7251
129	3156	2.62	39.34	0,1506	0,7251
130	3162	2.62	40.95	0,1840	0,7251
131	3168	2.62	42.52	0,1840	0,7251

<b>Koda - Dimenzija MOR-MAP</b>	<b>Cod. GB Other Ref.</b>	<b>S</b>	<b>d</b>	<b>MOR Euro</b>	<b>MAP Euro</b>
132	3175	2.62	44.12	0,1840	0,7251
133	3181	2.62	45.69	0,1953	0,8088
134	3187	2.62	47.30	0,1953	0,8088
135	3193	2.62	48.90	0,2120	0,8088
136	3200	2.62	50.47	0,2120	0,8088
137	3206	2.62	52.07	0,2510	0,8088
138	3212	2.62	53.65	0,2510	0,8088
139	3218	2.62	55.25	0,2510	0,8088
140	3225	2.62	56.82	0,2510	0,8088
141	3231	2.62	58.42	0,2510	0,8924
142	3237	2.62	60.00	0,2733	0,8924
143	3243	2.62	61.60	0,2733	0,8924
144	3250	2.62	63.17	0,2845	0,8924
145	3256	2.62	64.77	0,2845	0,8924
146	3262	2.62	66.35	0,3235	0,8924
147	3268	2.62	67.95	0,3235	0,8924
148	3275	2.62	69.52	0,3235	0,8924
149	3281	2.62	71.12	0,3235	0,8924
150	3287	2.62	72.69	0,3626	1,0318
151	3300	2.62	75.87	0,3626	1,0877
152	3325	2.62	82.22	0,4072	1,1155
153	3350	2.62	88.57	0,4406	1,2160
154	3375	2.62	94.92	0,4852	1,2438
155	3400	2.62	101.27	0,6135	
156	3425	2.62	107.62	0,7641	
157	3450	2.62	113.97	0,7641	1,7291
158	3475	2.62	120.33	0,8256	
159	3500	2.62	126.67	0,8702	
160	3525	2.62	133.00	1,0040	
161	3550	2.62	139.38	1,0040	
162	3575	2.62	145.72	1,1434	
163	3600	2.62	152.07	1,2160	
164	3625	2.62	158.43	1,3833	
165	3650	2.62	164.78	1,4502	
166	3675	2.62	171.13	1,5227	
167	3700	2.62	177.48	1,5227	
168	3725	2.62	183.83	1,7626	
169	3750	2.62	190.18	1,7626	
170	3775	2.62	196.53	1,7626	
171	3800	2.62	202.88	1,7626	
172	3825	2.62	209.23	1,9020	
173	3850	2.62	215.58	1,9020	
174	3875	2.62	221.93	2,0694	
175	3900	2.62	228.28	2,0694	
210	4075	3.53	18.64	0,1004	0,6414
211	4081	3.53	20.22	0,1004	0,6414
212	4087	3.53	21.82	0,1004	0,6414
213	4093	3.53	23.40	0,1283	0,6414
214	4100	3.53	24.99	0,1283	0,6414
618	134	3.53	25.80	0,1283	0,6414
215	4106	3.53	26.58	0,1283	0,6414

<b>Koda - Dimenzija MOR-MAP</b>	<b>Cod. GB Other Ref.</b>	<b>S</b>	<b>d</b>	<b>MOR Euro</b>	<b>MAP Euro</b>
216	4112	3.53	28.17	0,1338	0,6414
217	4118	3.53	29.75	0,1338	0,7251
218	4125	3.53	31.34	0,1338	0,7251
219	4131	3.53	32.92	0,1506	0,7251
220	4137	3.53	34.52	0,1506	0,7251
221	4143	3.53	36.09	0,1506	0,7251
222	4150	3.53	37.69	0,1840	0,7251
824	144	3.53	39.69	0,1840	0,7251
223	4162	3.53	40.87	0,1840	0,7251
825	146	3.53	41.28	0,1840	0,7251
826	147	3.53	42.86	0,1896	0,8088
224	4175	3.53	44.04	0,2120	0,8088
827	149	3.53	44.45	0,2120	0,8088
828	150	3.53	46.04	0,2120	0,8088
225	4187	3.53	47.22	0,2120	0,8088
829	152	3.53	47.63	0,2120	0,8088
830	153	3.53	49.21	0,2120	0,8088
226	4200	3.53	50.39	0,2120	0,8924
831	155	3.53	50.80	0,2120	0,8924
832	156	3.53	52.39	0,2120	0,8924
227	4212	3.53	53.57	0,2120	0,8924
833	158	3.53	53.98	0,2231	0,8924
834	159	3.53	55.56	0,2733	0,9482
228	4225	3.53	56.74	0,2733	0,9482
835	161	3.53	57.15	0,2733	0,9482
836	162	3.53	58.74	0,2845	0,9482
229	4237	3.53	59.92	0,2845	0,9482
837	164	3.53	60.33	0,2845	0,9482
838	165	3.53	61.91	0,2845	0,9482
230	4250	3.53	63.09	0,2845	0,9482
839	167	3.53	63.50	0,2845	0,9482
840	168	3.53	65.09	0,3012	0,9482
231	4262	3.53	66.27	0,3012	0,9482
841	170	3.53	66.68	0,3012	0,9482
842	171	3.53	68.26	0,3347	1,0040
232	4275	3.53	69.44	0,3347	1,0040
843	173	3.53	69.85	0,3347	1,0040
844	174	3.53	71.44	0,3458	1,0040
233	4287	3.53	72.62	0,3458	1,0040
845	176	3.53	73.03	0,3458	1,0040
846	177	3.53	74.61	0,3458	1,0040
234	4300	3.53	75.79	0,3458	1,0598
235	4312	3.53	78.97	0,3626	1,0598
236	4325	3.53	82.14	0,4295	1,0598
237	4337	3.53	85.32	0,4295	1,0598
238	4350	3.53	88.49	0,4295	1,1155
239	4362	3.53	91.67	0,4964	1,1155
240	4375	3.53	94.84	0,4964	1,1155
241	4387	3.53	98.02	0,4964	1,1155
242	4400	3.53	101.19	0,5801	1,2271
243	4412	3.53	104.37	0,6135	1,2271
244	4425	3.53	107.54	0,6135	1,2271
245	4437	3.53	110.72	0,6135	1,2271

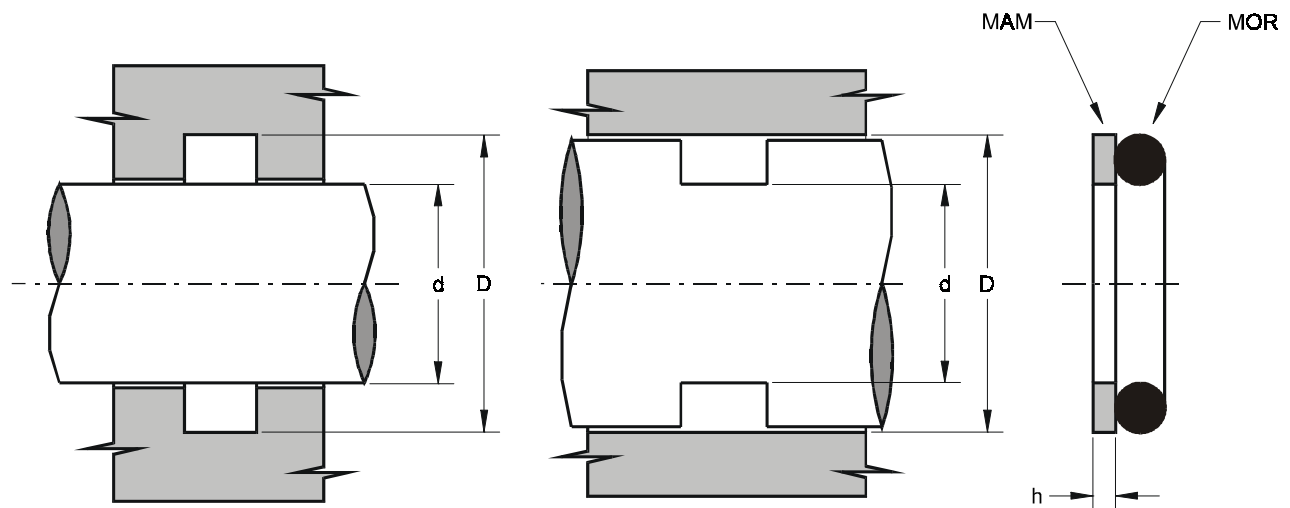
<b>Koda - Dimenzija MOR-MAP</b>	<b>Cod. GB Other Ref.</b>	<b>S</b>	<b>d</b>	<b>MOR Euro</b>	<b>MAP Euro</b>
246	4450	3.53	113.89	0,6470	1,3387
247	4462	3.53	117.07	0,6860	1,3387
248	4475	3.53	120.24	0,7641	1,3387
249	4487	3.53	123.42	0,7641	1,3387
250	4500	3.53	126.59	0,7641	1,4502
251	4512	3.53	129.77	0,8702	1,4502
252	4525	3.53	132.94	0,8702	1,4502
253	4537	3.53	136.12	0,9370	1,4502
254	4550	3.53	139.29	0,9370	1,4502
255	4562	3.53	142.47	1,0040	1,6175
256	4575	3.53	145.64	1,0040	1,6175
257	4587	3.53	148.82	1,0765	1,6175
258	4600	3.53	151.99	1,0765	1,6734
259	4625	3.53	158.34	1,0765	
260	4650	3.53	164.69	1,1434	
261	4675	3.53	171.04	1,3108	
262	4700	3.53	177.39	1,3833	
263	4725	3.53	183.74	1,3833	
264	4750	3.53	190.09	1,5227	
265	4775	3.53	196.44	1,5227	
266	4800	3.53	202.79	1,5227	
267	4825	3.53	209.14	1,9020	
268	4850	3.53	215.49	1,9020	
269	4875	3.53	221.84	2,0024	
270	4900	3.53	228.19	2,0024	
271	4925	3.53	234.54	2,1419	
272	4950	3.53	240.89	2,1419	
273	4975	3.53	247.24	2,1419	
274	41000	3.53	253.59	2,2813	
275	41050	3.53	266.29	4,5514	
276	41100	3.53	278.99	4,8303	
277	41150	3.53	291.69	4,9642	
278	41200	3.53	304.39	4,9642	
279	41300	3.53	329.79	5,1706	
280	41400	3.53	355.19	5,1706	
281	41500	3.53	380.59	5,3100	
325	6150	5.34	37.47	0.2566	1.0040
326	6162	5.34	40.65	0.2566	1.0040
327	6175	5.34	43.82	0,2733	1,0040
328	6187	5.34	47.00	0,2733	1,0040
329	6200	5.34	50.16	0,3235	1,0040
330	6212	5.34	53.34	0,3235	1,0040
331	6225	5.34	56.52	0,3514	1,0040
332	6237	5.34	59.69	0,3514	1,0040
333	6250	5.34	62.87	0,4239	1,0598
334	6262	5.34	66.04	0,4239	1,0598
335	6275	5.34	69.22	0,4406	1,0598
336	6287	5.34	72.39	0,4741	1,0598
619	178	5.34	74.63	0,4741	1,1155
337	6300	5.34	75.57	0,4852	1,1155
338	6312	5.34	78.74	0,4964	1,1155
620	181	5.34	79.77	0,4964	1,1155

<b>Koda - Dimenzija MOR-MAP</b>	<b>Cod. GB Other Ref.</b>	<b>S</b>	<b>d</b>	<b>MOR Euro</b>	<b>MAP Euro</b>
339	6325	5.34	81.92	0,5633	1,2829
340	6337	5.34	85.09	0,5801	1,2829
341	6350	5.34	88.27	0,6135	1,2829
621	185	5.34	89.69	0,6135	1,2829
342	6362	5.34	91.44	0,6135	1,3944
343	6375	5.34	94.62	0,6135	1,3944
344	6387	5.34	97.79	0,7307	1,3944
622	189	5.34	100.00	0,7307	1,3944
345	6400	5.34	100.97	0,7307	1,5618
346	6412	5.34	104.14	0,7307	1,5618
347	6425	5.34	107.32	0,7641	1,5618
623	193	5.34	109.50	0,7641	1,6734
348	6437	5.34	110.50	0,7641	1,6734
349	6450	5.34	113.67	0,7641	1,7849
350	-	5.34	116.84	0,8980	1,7849
860	199	5.34	117.50	0,8980	1,7849
351	-	5.34	120.02	0,8980	2,0079
861	201	5.34	120.70	0,8980	2,0079
352	-	5.34	123.20	0,8980	
862	203	5.34	123.80	0,8980	2,0079
353	-	5.34	126.37	1,0040	2,0079
863	206	5.34	127.00	1,0040	2,0079
354	-	5.34	129.54	1,0040	2,0079
864	208	5.34	130.20	1,0040	2,0079
355	-	5.34	132.72	1,0765	
865	210	5.34	133.40	1,0765	2,1195
356	-	5.34	135.90	1,0765	2,1195
866	213	5.34	136.50	1,0765	2,1195
357	-	5.34	139.07	1,1044	2,1195
867	215	5.34	139.70	1,3108	2,1195
358	-	5.34	142.24	1,3108	2,1195
868	217	5.34	142.90	1,3108	2,1195
359	-	5.34	145.42	1,4502	
869	219	5.34	146.10	1,4502	
360	-	5.34	148.60	1,4502	2,2590
870	221	5.34	149.20	1,4502	2,2590
361	6600	5.34	151.77	1,5227	
362	6625	5.34	158.12	1,6231	2,3985
363	6645	5.34	164.47	1,6956	2,6773
364	6670	5.34	170.82	1,6956	2,7889
365	6700	5.34	177.17	1,9020	2,8726
366	6720	5.34	183.52	1,9020	
367	6745	5.34	189.87	2,1419	3,3187
368	6775	5.34	196.22	2,2813	
369	6795	5.34	202.57	2,2813	
370	6820	5.34	208.92	2,2813	3,5976
371	6850	5.34	215.27	2,3817	
372	6870	5.34	221.62	2,3817	
373	6895	5.34	227.97	2,3817	
374	6920	5.34	234.32	2,3817	
375	6945	5.34	240.67	2,4542	
376	6975	5.34	247.02	2,5212	
377	6995	5.34	253.37	2,5212	

<b>Koda - Dimenzija MOR-MAP</b>	<b>Cod. GB Other Ref.</b>	<b>S</b>	<b>d</b>	<b>MOR Euro</b>	<b>MAP Euro</b>
378	61050	5.34	266.07	5,0311	
379	61100	5.34	278.77	5,3100	
380	61150	5.34	291.47	5,3769	
381	61200	5.34	304.17	5,5108	
382	61300	5.34	329.57	5,6559	
383	61400	5.34	354.97	5,7227	
384	61500	5.34	380.37	6,0686	
385	61600	5.34	405.26	6,2749	
386	61700	5.34	430.66	6,4758	
387	61800	5.34	456.06	6,8271	
388	61900	5.34	481.40	7,1005	
389	62000	5.34	506.80	7,2399	
390	62100	5.34	532.20	7,5801	
391	-	5.34	557.60	8,3387	
392	-	5.34	582.68	9,0973	
393	-	5.34	608.08	9,8335	
394	-	5.34	633.48	10,6145	
395	-	5.34	658.88	11,3786	
425	8450	6.99	113.67	1,0765	2,2032
624	197	6.99	114.70	1,0765	
426	8462	6.99	116.84	1,0765	2,2032
427	8475	6.99	120.02	1,0765	
428	8487	6.99	123.20	1,1434	2,3426
625	204	6.99	124.60	1,1434	
429	8500	6.99	126.37	1,2438	2,3426
430	8512	6.99	129.54	1,2438	
431	8525	6.99	132.72	1,3833	2,5379
626	211	6.99	134.50	1,3833	
432	8537	6.99	135.90	1,3833	2,5379
433	8550	6.99	139.07	1,3833	2,5379
434	8562	6.99	142.24	1,5227	
435	8575	6.99	145.42	1,5227	2,6773
436	8587	6.99	148.60	1,6231	
437	8600	6.99	151.77	1,6231	
872	223	6.99	155.60	1,6956	2,7889
438	8625	6.99	158.12	1,6956	
627	225	6.99	159.50	1,6956	
874	226	6.99	161.90	1,6956	
439	8650	6.99	164.47	1,6956	
628	228	6.99	166.70	1,6956	2,9283
876	229	6.99	168.30	1,6956	
440	8675	6.99	170.82	1,6956	
878	231	6.99	174.60	1,9020	
441	8700	6.99	177.17	1,9020	
880	233	6.99	181.00	1,9020	
442	8725	6.99	183.52	1,9020	3,3187
882	235	6.99	187.30	2,0694	
443	8750	6.99	189.87	2,0694	3,3187
884	237	6.99	193.70	2,0694	
444	8775	6.99	196.22	2,0694	3,6813
886	239	6.99	200.00	2,0694	
445	8800	6.99	202.57	2,2813	

<b>Koda - Dimenzija MOR-MAP</b>	<b>Cod. GB Other Ref.</b>	<b>S</b>	<b>d</b>	<b>MOR Euro</b>	<b>MAP Euro</b>
674	8825	6.99	208.92	2,2813	
446	8850	6.99	215.27	2,2813	
676	8875	6.99	221.62	2,2813	
447	8900	6.99	227.97	2,4542	
678	8925	6.99	234.32	2,4542	
448	8950	6.99	240.67	2,5212	
680	8975	6.99	247.00	2,5936	
449	81000	6.99	253.30	2,7610	
682	81025	6.99	259.70	2,7610	
450	81050	6.99	266.07	2,9004	
684	81075	6.99	272.40	3,2797	
451	81100	6.99	278.77	3,2797	
686	81125	6.99	285.10	3,7929	
452	81150	6.99	291.47	4,8303	
688	81175	6.99	297.80	4,8303	
453	81200	6.99	304.17	5,1706	
454	81250	6.99	316.87	5,7227	
455	81300	6.99	329.57	5,9291	
456	81350	6.99	342.27	5,9291	
457	81400	6.99	354.97	6,0686	
458	81450	6.99	367.67	6,4758	
459	81500	6.99	380.37	6,6877	
460	81550	6.99	393.07	7,2399	
461	81600	6.99	405.26	7,5801	
462	81650	6.99	417.96	8,3387	
463	81700	6.99	430.66	8,7571	
464	81750	6.99	443.36	9,0973	
465	81800	6.99	456.06	9,5157	
466	81850	6.99	468.76	9,8559	
467	81900	6.99	481.46	10,6145	
468	81950	6.99	494.16	11,3786	
469	82000	6.99	506.86	12,1315	
470	82100	6.99	532.26	12,8901	
471	82200	6.99	557.66	13,6487	
472	82300	6.99	582.68	14,7531	

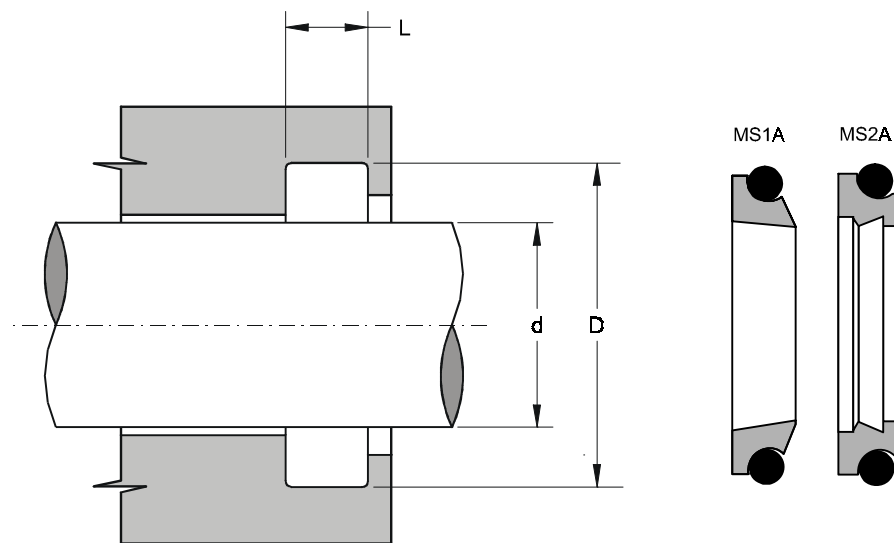
# MAM Podporni obroč metrična izvedba – *Antiextrusion ring metric series*



Koda - Part No.	d	D	h	€uro
MAM 20 25 1.3	20	25	1.3	0,4183
MAM 25 30 1.3	25	30	1.3	0,4463
MAM 30 35 1.3	30	35	1.3	0,4741
MAM 35 40 1.3	35	40	1.3	0,5020
MAM 40 45 1.3	40	45	1.3	0,5298
MAM 45 50 1.3	45	50	1.3	0,5578
MAM 50 55 1.3	50	55	1.3	0,5857
MAM 55 60 1.3	55	60	1.3	0,6135
MAM 58 63 1.3	58	63	1.3	0,6414
MAM 60 65 1.3	60	65	1.3	0,6693
MAM 65 70 1.3	65	70	1.3	0,6972
MAM 70 75 1.3	70	75	1.3	0,7251
MAM 75 80 1.3	75	80	1.3	0,7530
MAM 80 85 1.3	80	85	1.3	0,8645
MAM 85 90 1.3	85	90	1.3	0,8645
MAM 90 95 1.3	90	95	1.3	0,8924
MAM 95 100 1.3	95	100	1.3	0,9482
MAM 100 105 1.3	100	105	1.3	1,0040
MAM 105 110 1.3	105	110	1.3	1,0318
MAM 110 115 1.3	110	115	1.3	1,0598
MAM 115 120 1.3	115	120	1.3	1,1155
MAM 120 125 1.3	120	125	1.3	1,2271
MAM 125 130 1.3	125	130	1.3	1,2829
MAM 50 60 1.7	50	60	1.7	0,6693
MAM 60 70 1.7	60	70	1.7	0,7530
MAM 65 75 1.7	65	75	1.7	0,8088
MAM 70 80 1.7	70	80	1.7	0,8645
MAM 75 85 1.7	75	85	1.7	0,8924
MAM 80 90 1.7	80	90	1.7	0,9761

<i>Koda - Part No.</i>	<i>d</i>	<i>D</i>	<i>h</i>	<i>€uro</i>
<b>MAM 85 95 1.7</b>	85	95	1.7	<b>1,0040</b>
<b>MAM 90 100 1.7</b>	90	100	1.7	<b>1,0318</b>
<b>MAM 95 105 1.7</b>	95	105	1.7	<b>1,0598</b>
<b>MAM 100 110 1.7</b>	100	110	1.7	<b>1,1155</b>
<b>MAM 105 115 1.7</b>	105	115	1.7	<b>1,1992</b>
<b>MAM 110 120 1.7</b>	110	120	1.7	<b>1,2550</b>
<b>MAM 115 125 1.7</b>	115	125	1.7	<b>1,2829</b>
<b>MAM 120 130 1.7</b>	120	130	1.7	<b>1,3387</b>
<b>MAM 125 135 1.7</b>	125	135	1.7	<b>1,3944</b>
<b>MAM 130 140 1.7</b>	130	140	1.7	<b>1,4224</b>
<b>MAM 135 145 1.7</b>	135	145	1.7	<b>1,5060</b>
<b>MAM 140 150 1.7</b>	140	150	1.7	<b>1,6175</b>
<b>MAM 145 155 1.7</b>	145	155	1.7	<b>1,6734</b>
<b>MAM 150 160 1.7</b>	150	160	1.7	<b>1,7291</b>

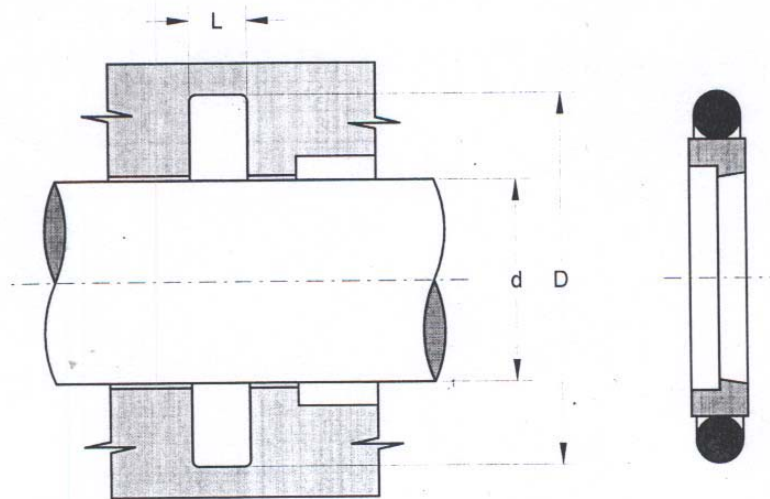
# MS1A-MS2A Posnemalo – Rod wiper



Koda - Part No.	d	D	L	€uro
MS1A 8 12,8 3,7	8	12,8	3,7	3,006
MS1A 10 14,8 3,7	10	14,8	3,7	3,006
MS1A 12 18,8 5	12	18,8	5,0	3,378
MS1A 14 20,8 5	14	20,8	5,0	3,471
MS1A 15 21,8 5	15	21,8	5,0	3,626
MS1A 16 22,8 5	16	22,8	5,0	3,750
MS1A 18 24,8 5	18	24,8	5,0	3,842
MS1A 20 26,8 5	20	26,8	5,0	3,842
MS1A 24 30,8 5	24	30,8	5,0	4,121
MS1A 25 31,8 5	25	31,8	5,0	4,121
MS1A 28 34,8 5	28	34,8	5,0	4,524
MS1A 30 36,8 5	30	36,8	5,0	4,679
MS1A 32 38,8 5	32	38,8	5,0	4,896
MS1A 35 41,8 5	35	41,8	5,0	5,113
MS1A 40 46,8 5	40	46,8	5,0	5,268
MS1A 42 48,8 5	42	48,8	5,0	5,268
MS1A 45 51,8 5	45	51,8	5,0	5,640
MS1A 50 56,8 5	50	56,8	5,0	6,414
MS1A 55 61,8 5	55	61,8	5,0	6,786
MS1A 56 62,8 5	56	62,8	5,0	7,158
MS1A 60 66,8 5	60	66,8	5,0	7,530
MS1A 65 73,8 6	65	73,8	6,0	8,676
MS1A 70 78,8 6	70	78,8	6,0	10,939
MS1A 75 83,8 6	75	83,8	6,0	11,682
MS1A 80 88,8 6	80	88,8	6,0	12,085
MS1A 85 93,8 6	85	93,8	6,0	12,457
MS1A 90 98,8 6	90	98,8	6,0	12,829
MS1A 95 103,8 6	95	103,8	6,0	13,201
MS1A 100 108,8 6	100	108,8	6,0	13,572
MS1A 110 118,8 6	110	118,8	6,0	15,091
MS1A 120 128,8 6	120	128,8	6,0	16,609
MS1A 125 133,8 6	125	133,8	6,0	18,128
MS1A 130 138,8 6	130	138,8	6,0	23,395
MS1A 140 148,8 6	140	148,8	6,0	25,069
MS1A 160 168,8 6	160	168,8	6,0	28,694
MS1A 170 178,8 6	170	178,8	6,0	30,956
MS1A 180 188,8 6	180	188,8	6,0	32,847

<i>Koda - Part No.</i>	<i>d</i>	<i>D</i>	<i>L</i>	<i>€uro</i>
<b>MS1A 200 208,8 6</b>	200	208,8	6,0	<b>37,743</b>
<b>MS2A 8 12,8 3,7</b>	8	12,8	3,7	<b>3,223</b>
<b>MS2A 10 14,8 3,7</b>	10	14,8	3,7	<b>3,285</b>
<b>MS2A 12 18,8 5</b>	12	18,8	5,0	<b>3,564</b>
<b>MS2A 14 20,8 5</b>	14	20,8	5,0	<b>3,687</b>
<b>MS2A 15 21,8 5</b>	15	21,8	5,0	<b>3,811</b>
<b>MS2A 16 22,8 5</b>	16	22,8	5,0	<b>3,935</b>
<b>MS2A 18 24,8 5</b>	18	24,8	5,0	<b>4,059</b>
<b>MS2A 20 26,8 5</b>	20	26,8	5,0	<b>4,121</b>
<b>MS2A 24 30,8 5</b>	24	30,8	5,0	<b>4,276</b>
<b>MS2A 25 31,8 5</b>	25	31,8	5,0	<b>4,338</b>
<b>MS2A 28 34,8 5</b>	28	34,8	5,0	<b>4,710</b>
<b>MS2A 30 36,8 5</b>	30	36,8	5,0	<b>4,927</b>
<b>MS2A 32 38,8 5</b>	32	38,8	5,0	<b>5,175</b>
<b>MS2A 35 41,8 5</b>	35	41,8	5,0	<b>5,392</b>
<b>MS2A 40 46,8 5</b>	40	46,8	5,0	<b>5,516</b>
<b>MS2A 42 48,8 5</b>	42	48,8	5,0	<b>5,516</b>
<b>MS2A 45 51,8 5</b>	45	51,8	5,0	<b>5,919</b>
<b>MS2A 50 56,8 5</b>	50	56,8	5,0	<b>6,693</b>
<b>MS2A 55 61,8 5</b>	55	61,8	5,0	<b>7,065</b>
<b>MS2A 56 62,8 5</b>	56	62,8	5,0	<b>7,065</b>
<b>MS2A 60 66,8 5</b>	60	66,8	5,0	<b>7,871</b>
<b>MS2A 65 73,8 6</b>	65	73,8	6,0	<b>8,986</b>
<b>MS2A 70 78,8 6</b>	70	78,8	6,0	<b>11,186</b>
<b>MS2A 75 83,8 6</b>	75	83,8	6,0	<b>12,054</b>
<b>MS2A 80 88,8 6</b>	80	88,8	6,0	<b>12,643</b>
<b>MS2A 85 93,8 6</b>	85	93,8	6,0	<b>12,953</b>
<b>MS2A 90 98,8 6</b>	90	98,8	6,0	<b>13,542</b>
<b>MS2A 95 103,8 6</b>	95	103,8	6,0	<b>14,130</b>
<b>MS2A 100 108,8 6</b>	100	108,8	6,0	<b>14,409</b>
<b>MS2A 110 118,8 6</b>	110	118,8	6,0	<b>16,485</b>
<b>MS2A 120 128,8 6</b>	120	128,8	6,0	<b>20,018</b>
<b>MS2A 125 133,8 6</b>	125	133,8	6,0	
<b>MS2A 130 138,8 6</b>	130	138,8	6,0	
<b>MS2A 140 148,8 6</b>	140	148,8	6,0	
<b>MS2A 160 168,8 6</b>	160	168,8	6,0	
<b>MS2A 170 178,8 6</b>	170	178,8	6,0	
<b>MS2A 180 188,8 6</b>	180	188,8	6,0	
<b>MS2A 200 208,8 6</b>	200	208,8	6,0	

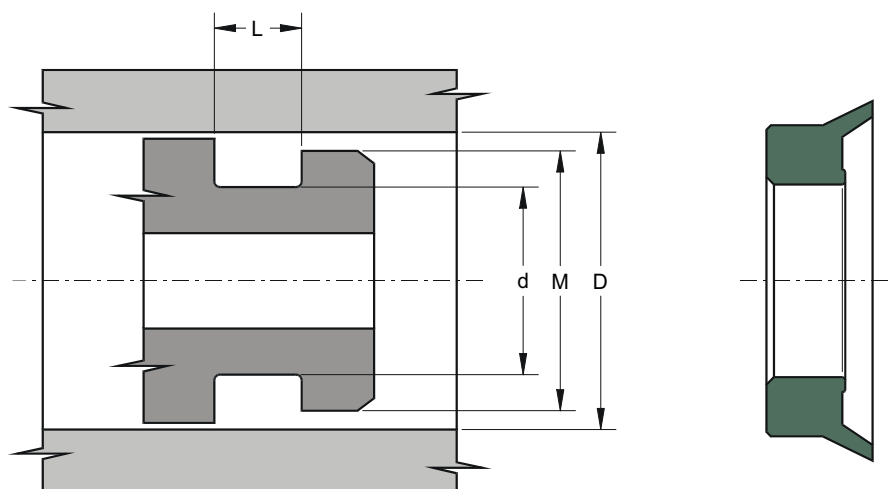
# MXB Tesnilo batnice PTFE + bronza – Rod seal with PTFE + bronze



Koda - Part No.	d	D	L	O-Ring	€uro
MXB 10 17,3 3,2	10	17,3	3,2	112	2,120
MXB 12 19,3 3,2	12	19,3	3,2	114	2,120
MXB 14 21,3 3,2	14	21,3	3,2	115	2,188
MXB 15 22,3 3,2	15	22,3	3,2	116	2,268
MXB 16 23,3 3,2	16	23,3	3,2	116	2,268
MXB 18 25,3 3,2	18	25,3	3,2	117	2,268
MXB 20 30,7 4,2	20	30,7	4,2	214	2,566
MXB 22 32,7 4,2	22	32,7	4,2	215	2,566
MYB 24 34,7 4,2	24	34,7	4,2	216	2,721
MXB 25 35,7 4,2	25	35,7	4,2	217	2,721
MXB 28 38,7 4,2	28	38,7	4,2	219	2,869
MXB 30 40,7 4,2	30	40,7	4,2	220	3,018
MXB 32 42,7 4,2	32	42,7	4,2	221	3,328
MXB 35 45,7 4,2	35	45,7	4,2	222	3,626
MXB 37 47,7 4,2	37	47,7	4,2	223	6,043
MXB 38 53,1 6,3	38	53,1	6,3	327	6,043
MXB 40 55,1 6,3	40	55,1	6,3	328	6,043
MXB 45 60,1 6,3	45	60,1	6,3	329	6,662
MXB 48 63,1 6,3	48	63,1	6,3	330	6,910
MXB 50 65,1 6,3	50	65,1	6,3	331	7,177
MXB 55 70,1 6,3	55	70,1	6,3	332	7,784
MXB 56 71,1 6,3	56	71,1	6,3	333	7,784
MXB 60 75,1 6,3	60	75,1	6,3	334	8,608
MXB 65 80,1 6,3	65	80,1	6,3	335	9,067
MXB 70 85,1 6,3	70	85,1	6,3	337	9,445
MXB 75 90,1 6,3	75	90,1	6,3	339	9,823
MXB 80 95,1 6,3	80	95,1	6,3	340	9,823
MXB 85 100,1 6,3	85	100,1	6,3	342	10,573
MXB 90 105,1 6,3	90	105,1	6,3	343	11,335
MXB 95 110,1 6,3	95	110,1	6,3	345	12,085
MXB 100 115,1 6,3	100	115,1	6,3	346	12,847
MXB 110 125,1 6,3	110	125,1	6,3	350	15,866
MXB 120 135,1 6,3	120	135,1	6,3	353	19,640
MXB 125 140,1 6,3	125	140,1	6,3	354	21,908
MXB 130 145,1 6,3	130	145,1	6,3	356	23,420

<i>Koda - Part No.</i>	<i>d</i>	<i>D</i>	<i>L</i>	<i>O-Ring</i>	<i>€uro</i>
<b>MXB 140 155,1 6,3</b>	140	155,1	6,3	359	<b>26,439</b>
<b>MXB 150 165,1 6,3</b>	150	165,1	6,3	361	<b>33,993</b>
<b>MXB 160 175,1 6,3</b>	160	175,1	6,3	363	<b>37,767</b>
<b>MXB 180 195,1 6,3</b>	180	195,1	6,3	366	<b>41,548</b>
<b>MXB 190 205,1 6,3</b>	190	205,1	6,3	368	<b>51,365</b>
<b>MXB 200 220,5 8,1</b>	200	220,5	8,1	445	<b>57,407</b>
<b>MXB 210 230,5 8,1</b>	210	230,5	8,1	446	<b>76,297</b>
<b>MXB 220 240,5 8,1</b>	220	240,5	8,1	447	<b>78,559</b>
<b>MXB 230 250,5 8,1</b>	230	250,5	8,1	448	<b>89,132</b>
<b>MXB 240 260,5 8,1</b>	240	260,5	8,1	448	<b>98,961</b>
<b>MXB 250 270,5 8,1</b>	250	270,5	8,1	449	<b>109,534</b>
<b>MXB 260 284,0 8,1</b>	260	284,0	8,1	450	<b>115,199</b>
<b>MXB 270 294,0 8,1</b>	270	294,0	8,1	451	<b>121,260</b>

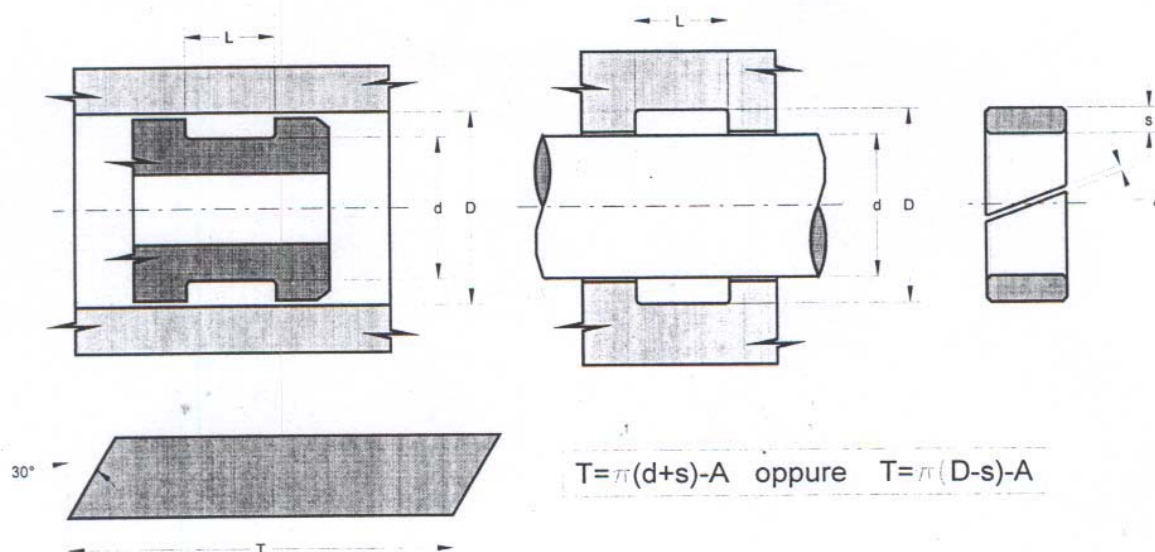
# MYB Batno tesnilo PTFE + bronza – Piston seal PTFE + bronze



Koda - Part No.	D	d	L	O-Ring	€uro
MYB 16 8,5 3,2	16	8,5	3,2	109	1,438
MYB 18 10,5 3,2	18	10,5	3,2	110	1,593
MYB 20 12,5 3,2	20	12,5	3,2	111	1,735
MYB 22 14,5 3,2	22	14,5	3,2	113	1,816
MYB 24 16,5 3,2	24	16,5	3,2	114	1,965
MYB 25 17,5 3,2	25	17,5	3,2	115	1,965
MYB 28 20,5 3,2	28	20,5	3,2	116	2,411
MYB 30 22,5 3,2	30	22,5	3,2	118	2,411
MYB 32 24,5 3,2	32	24,5	3,2	119	2,566
MYB 35 27,5 3,2	35	27,5	3,2	121	2,721
MYB 36 28,5 3,2	36	28,5	3,2	122	2,814
MYB 38 30,5 3,2	38	30,5	3,2	123	2,869
MYB 40 29 4,2	40	29,0	4,2	216	3,018
MYB 42 31 4,2	42	31,0	4,2	217	3,018
MYB 45 34 4,2	45	34,0	4,2	219	3,247
MYB 48 37 4,2	48	37,0	4,2	221	3,855
MYB 50 39 4,2	50	39,0	4,2	222	4,530
MYB 52 41 4,2	52	41,0	4,2	223	5,063
MYB 55 44 4,2	55	44,0	4,2	224	5,063
MYB 57 46 4,2	57	46,0	4,2	224	5,553
MYB 60 49 4,2	60	49,0	4,2	225	6,043
MYB 63 52 4,2	63	52,0	4,2	226	6,421
MYB 65 54 4,2	65	54,0	4,2	227	6,501
MYB 70 59 4,2	70	59,0	4,2	228	6,799
MYB 75 64 4,2	75	64,0	4,2	230	7,555
MYB 80 64,5 6,3	80	64,5	6,3	333	8,311
MYB 85 69,5 6,3	85	69,5	6,3	335	8,608
MYB 90 74,5 6,3	90	74,5	6,3	336	9,067
MYB 95 79,5 6,3	95	79,5	6,3	338	10,195
MYB 100 84,5 6,3	100	84,5	6,3	339	10,573
MYB 105 89,5 6,3	105	89,5	6,3	341	11,025
MYB 110 94,5 6,3	110	94,5	6,3	343	11,025

<i>Koda - Part No.</i>	<i>D</i>	<i>d</i>	<i>L</i>	<i>O-Ring</i>	<i>€uro</i>
MYB 115 99,5 6,3	115	99,5	6,3	344	13,975
MYB 120 104,5 6,3	120	104,5	6,3	346	15,481
MYB 125 109,5 6,3	125	109,5	6,3	347	15,866
MYB 130 114,5 6,3	130	114,5	6,3	349	17,372
MYB 135 114 8,1	135	114,0	8,1	425	21,146
MYB 140 119 8,1	140	119,0	8,1	426	22,658
MYB 145 124 8,1	145	124,0	8,1	428	24,926
MYB 150 129 8,1	150	129,0	8,1	429	27,195
MYB 160 139 8,1	160	139,0	8,1	433	28,701
MYB 170 149 8,1	170	149,0	8,1	436	34,334
MYB 180 159 8,1	180	159,0	8,1	438	40,036
MYB 190 169 8,1	190	169,0	8,1	439	41,548
MYB 200 179 8,1	200	179,0	8,1	441	49,859
MYB 210 189 8,1	210	189,0	8,1	442	59,335
MYB 220 199 8,1	220	199,0	8,1	444	66,468
MYB 230 209 8,1	230	209,0	8,1	445	70,248
MYB 240 219 8,1	240	219,0	8,1	446	74,779
MYB 250 229 8,1	250	229,0	8,1	447	83,852
MYB 260 239 8,1	260	239,0	8,1	447	91,407
MYB 280 259 8,1	280	259,0	8,1	449	100,467
MYB 290 269 8,1	290	269,0	8,1	450	108,022
MYB 300 279 8,1	300	279,0	8,1	451	113,315

# MMRB Vodilni trak PTFE + bronza – Guide ring PTFE + bronze



Koda - Part No.	S	L	€uro/m
MMRB 15032	1,5	3,2	2,913
MMRB 15062	1,5	6,2	3,533
MMRB 15063	1,5	6,3	3,533
MMRB 15150	1,5	15,0	8,800
MMRB 15250	1,5	25,0	11,155
MMRB 20042	2,0	4,2	3,533
MMRB 20063	2,0	6,3	4,710
MMRB 20081	2,0	8,1	5,888
MMRB 20097	2,0	9,7	7,065
MMRB 20150	2,0	15,0	9,978
MMRB 20200	2,0	20,0	13,511
MMRB 20250	2,0	25,0	16,485
MMRB 20300	2,0	30,0	19,398
MMRB 25042	2,5	4,2	4,710
MMRB 25056	2,5	5,6	5,268
MMRB 25063	2,5	6,3	5,888
MMRB 25081	2,5	8,1	7,065
MMRB 25097	2,5	9,7	7,623
MMRB 25120	2,5	12,0	8,800
MMRB 25125	2,5	12,5	8,800
MMRB 25128	2,5	12,8	8,800
MMRB 25150	2,5	15,0	11,155
MMRB 25200	2,5	20,0	15,308
MMRB 25250	2,5	25,0	18,840
MMRB 25300	2,5	30,0	22,373
MMRB 30096	3,0	9,6	15,308
MMRB 30128	3,0	12,8	16,485
MMRB 30150	3,0	15,0	17,043
MMRB 30192	3,0	19,2	18,221
MMRB 30200	3,0	20,0	18,221
MMRB 30250	3,0	25,0	22,373
MMRB 30300	3,0	30,0	27,083
MMRB 30350	3,0	35,0	31,173
MMRB 30400	3,0	40,0	34,706